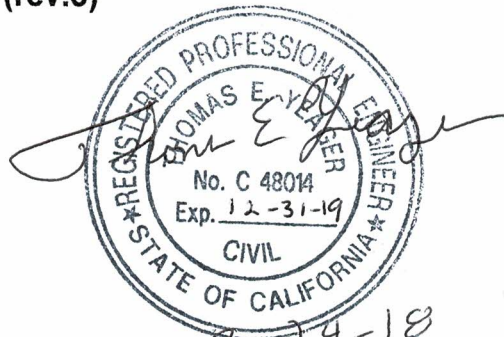


**BAYSHORE SANITARY DISTRICT  
SAN MATEO COUNTY, CALIFORNIA**

**STANDARD SPECIFICATIONS  
FOR  
DESIGN AND CONSTRUCTION OF  
SANITARY SEWER COLLECTION AND  
CONVEYANCE FACILITIES**

**(rev.3)**



**MARCH 2018**

3-24-18

Bayshore Sanitary District  
36 Industrial Way  
Brisbane, CA 94005  
(650) 336-1059  
(650) 366-1587 Fax  
[BayshoreSanitary@aol.com](mailto:BayshoreSanitary@aol.com)

## TABLE OF CONTENTS

<b><u>PART A - GENERAL INFORMATION</u></b>		<b><u>PAGE</u></b>
SECTION A1	INTRODUCTION AND SCOPE	A-01
1.01	Introduction	A-01
1.02	District Boundary	A-01
1.03	Master Sewerage Plan	A-02
1.04	Annual Sewer Service Charge and Connection Fees	A-02
SECTION A2	DEFINITIONS	A-03
2.01	Definitions	A-03
	District Map	A-06
<b><u>PART B - DESIGN STANDARDS</u></b>		
SECTION B1	GENERAL REQUIREMENTS	B-01
1.01	Scope	B-01
1.02	Design Calculations	B-01
1.03	Unit Design Factors	B-02
SECTION B2	GRAVITY SEWERS, FORCE MAINS, AND PUMPING STATIONS	B-04
2.01	Scope	B-04
2.02	Gravity Sewers	B-04
2.03	Force Mains	B-06
2.04	Pumping Stations	B-06
<b><u>PART C - CONSTRUCTION STANDARDS</u></b>		
SECTION C1	SPECIAL CONDITIONS AND CONSTRUCTION REQUIREMENTS	C-01
1.01	Arrangement of Specifications	C-01
1.02	Standard Specifications	C-01
1.03	Existing Utilities	C-02
1.04	Dust Control	C-02
1.05	Encroachment Permits	C-02
1.06	Work Within Railroad and Highway Right-of-Ways	C-02
1.07	Work in Easements	C-02
1.08	Operation of Existing Facilities	C-02
1.09	Safety and Health Provisions	C-03
1.10	Hazardous Materials	C-03

SECTION C2	EARTHWORK	C-04
2.01	Scope	C-04
2.02	General Requirements	C-04
2.03	Excavation and Backfill for Structures	C-05
2.04	Excavation and Backfill for Sewer Lines	C-06
2.05	Clean Up	C-07
SECTION C3	CONCRETE WORK	C-08
3.01	Scope	C-08
3.02	Materials	C-08
3.03	Concrete	C-09
3.04	Mortar and Grout	C-10
3.05	Precast Concrete Manholes	C-10
3.06	Special Concrete Structures	C-11
SECTION C4	PIPELINES AND SEWERS	C-14
4.01	Scope	C-14
4.02	Materials	C-14
4.03	Installation	C-16
4.04	Connections to Existing Manholes	C-17
4.05	Connections to Existing Pipes	C-17
4.06	Side Sewer Connections to Main Sewers	C-17
4.07	Boring and Jacking	C-18
4.08	Concrete Thrust Blocks	C-19
4.09	Acceptance Tests	C-19
SECTION C4B	TRENCHLESS REPLACEMENT	C-24
4B.01	Scope	C-24
4B.02	Submittals	C-24
4B.03	Pipe Materials	C-24
4B.04	Trenchless Method and Equipment	C-25
4B.05	Treatment of Pipe	C-26
4B.06	Insertion and Pulling Pits	C-27
4B.07	Pipe Insertion	C-27
4B.08	Maintaining Sewer Service	C-28
4B.09	Pipe Joining	C-28
4B.10	Laterals	C-28
4B.11	Excavation and Backfill	C-29
4B.12	Cleaning, Testing, and Inspecting	C-29
4B.13	Restoration	C-29

SECTION C5	RESURFACING	C-31
5.01	Scope	C-31
5.02	General	C-31
5.03	Materials	C-31
5.04	Preparation of Subgrade	C-31
5.05	Concrete Surfaces	C-32
5.06	Asphaltic Surfaces	C-32
5.07	Surface Treatments	C-32
5.08	Restoration of Surface Markers	C-32
SECTION C6	SEWER LINE CLEANING	C-33
6.01	Intent	C-33
6.02	Materials to be Removed	C-33
6.03	Sewer Cleaning Procedures	C-33
6.04	Pipe Damage Preventing Cleaning Operations	C-34
6.05	Debris Removal	C-34
6.06	Cleaning Tasks	C-34
6.07	Cleaning Methods	C-34
6.08	Cleaning Equipment	C-38
6.09	Cleaning Precautions	C-42
6.10	Disposal of Materials	C-42
6.11	Root Removal	C-43
6.12	Chemical Root Treatment	C-43
6.13	Chemical Root Treatment Methods	C-43
6.14	Final Acceptance	C-43
6.15	Variables Which the Difficulty of Sewer Cleaning	C-44
SECTION C7	SEWER FLOW CONTROL	C-45
7.01	Intent	C-45
7.02	Depth of Flow	C-45
7.03	Plugging	C-45
7.04	Pumping and Bypassing	C-45
7.05	Flow Control Precautions	C-46
SECTION C8	TELEVISION INSPECTION	C-47
8.01	Equipment and TV Picture Quality	C-47
8.02	TV Inspection Procedures	C-47
8.03	Distance Measurements	C-48
8.04	Documentation	C-48
8.05	Terms Used in Inspection Reports	C-50
8.06	Types of Pipe (Abbreviations)	C-50
8.07	Types of Sewer Pipe Joints	C-51
8.08	Types of Service Connections	C-51
8.09	Types of Debris	C-51
8.10	Variables Which Affect the Difficulty of TV Inspection	C-51

SECTION C9	SMOKE TESTING	C-53
9.01	Equipment	C-53
9.02	Smoke Bomb	C-53
9.03	Personnel	C-53
9.04	Procedure	C-53
9.05	Notification and Public Information	C-54
9.06	Records	C-54
9.07	Safety	C-55

#### **PART D - STANDARD DRAWINGS**

Standard No.1	Standard Trench Detail
Standard No.2	Manhole Frame and Cover
Standard No.3	Pressure Type Manhole Frame and Cover
Standard No.4	Standard Manhole
Standard No.5	Manhole Drop Inlet
Standard No.6	Flush Inlet or Lamphole
Standard No.7	Service Lateral Connection
Standard No.8	Lateral Connection to Sewer Main – Type 1 & Type 2
Standard No.9	Lateral Connection to Existing VCP Main – Type 3
Standard No.10	Strap on Lateral Connection to HDPE or PVC Sewer Pipe – Type 4
Standard No.11	Typical Service Lateral Cleanout
Standard No.12	<del>Backflow Prevention Device</del> <b>DELETED</b>
Standard No.13	Sewer Support Across Trenches
Standard No.14	Side Sewer at Utility Crossing

## SECTION A1 - INTRODUCTION AND SCOPE{PRIVATE }

### A1.01 INTRODUCTION

The District's Standard Specifications have been prepared by the Bayshore Sanitary District to aid all persons engaged in the design or construction of sewerage facilities for the District. These specifications are periodically updated to reflect changes in materials and technology affecting the District's wastewater facilities. Users to these specifications are urged to verify with the District that these are the latest specifications, including all addenda.

The information contained herein is not intended to be used as a contract document either for contracts between the District and a contractor or for contracts between a subdivider or private person and a contractor. Rather, separate contract documents must be prepared for each project, with each such contract containing a "Special Provisions" section applicable to that particular project. In such contracts, construction details included herein may be included by reference.

The District Standard Specifications are divided into four parts, each of which is briefly described below:

1. Part A - General Information

Part A includes a general description of the intent and purpose of the District's Standard Specifications, a brief description of the District's Master Plan, and definitions of terms used herein.

2. Part B - Design Standards

Part B describes standards to be used in the design of wastewater facilities for the District.

3. Part C - Construction Standards

Part C, written in the form of typical specifications, covers the District's construction standards. These standards must be followed in any work constructed for the District's acceptance, and should be included by reference in construction contracts.

4. Part D - Standard Drawings

Part D consists of fourteen (14) standard drawings and details, which must be followed where applicable, in any work done for the District's acceptance. Applicable standard drawings shall be shown on construction drawings, or referenced to the District's Standard Drawings.

### A1.02 DISTRICT BOUNDARY

The boundary of the Bayshore Sanitary District is shown on the map on page A-06. All sanitary sewers constructed within that boundary come under the jurisdiction of the District and must comply with the standards set forth herein.

### A1.03 MASTER SEWERAGE PLAN

In April 1968, the District Board of the Bayshore Sanitary District officially adopted a report entitled "Sewerage System Study" as a Master Plan to serve as a guide for future construction of sewerage system facilities.

That report presents a complete sewerage plan for developed areas as of 1968 within the ultimate service area boundary of the District. Copies of the report are on file in the District Office and it is suggested that any person who proposes to construct sewers within the District consult the report prior to design or layout.

On October of 1981, the District issued its "Master Plan" which addressed the capacity of each sewer segment in the District. This Master Plan outlines the ability of the District to serve vacant lots in its service area. Copies of the "Master Plan" are on file at the District's office for reference.

Copies of the District Sewer Collection System map are also available at the District office. This map is schematic in nature, and the field verification of horizontal position and elevation is required on all plans submitted.

### A1.04 ANNUAL SEWER SERVICE CHARGE AND CONNECTION FEES

The most current District Ordinance, on file at the District office, governs all annual charges and connection fees.

## SECTION A2 - DEFINITIONS

### A2.01 DEFINITIONS

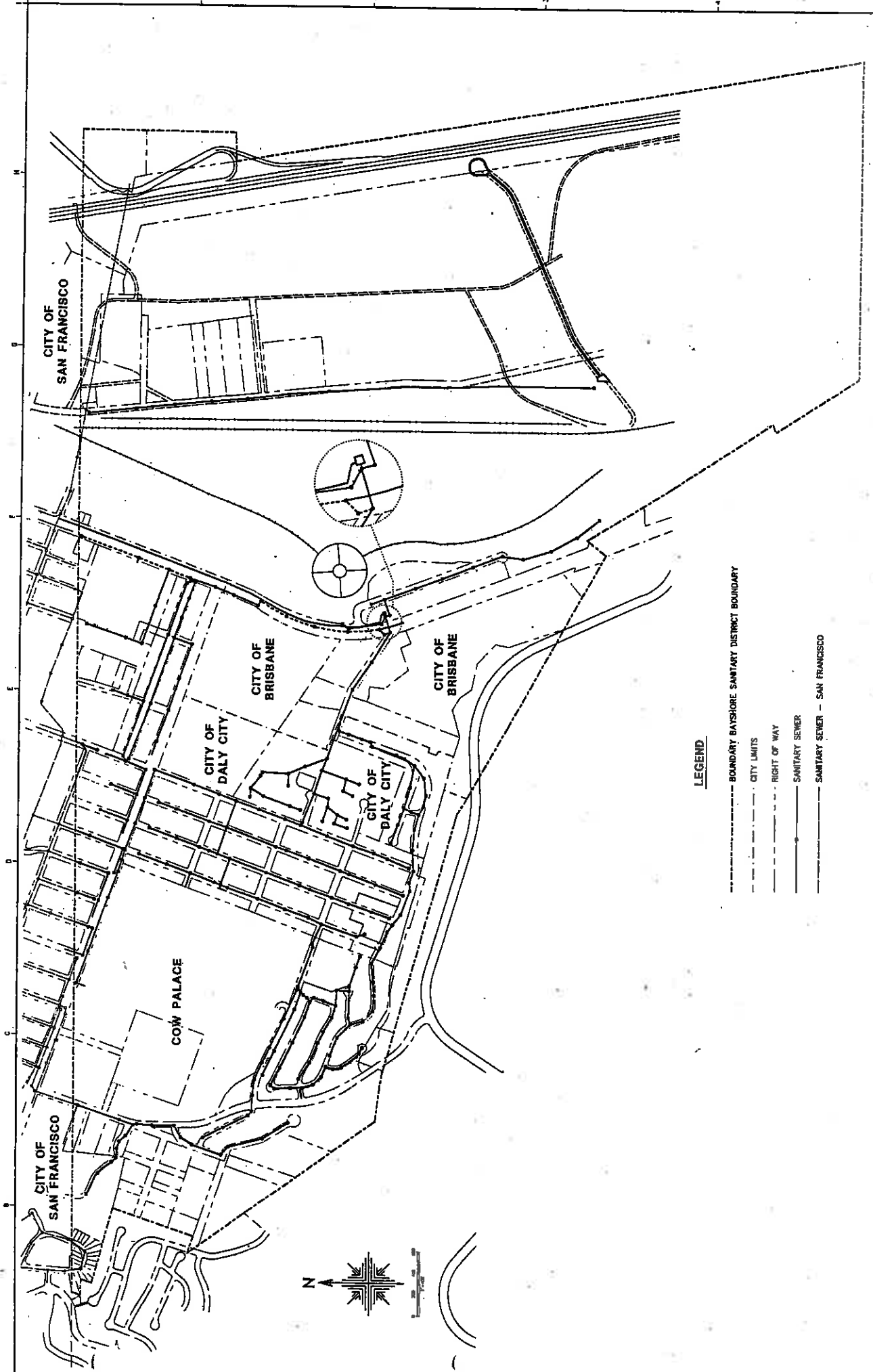
Terms that appear throughout these Standard Specifications have the following meanings:

1. APPLICANT: shall mean the person making application for a permit for a sewer or plumbing installation and shall be the owner, or his authorized agent, of the premises to be served by the sewer for which a permit is requested.
2. BOARD: shall mean the Board of Directors of said District.
3. BUILDING: shall mean any structure used for human habitation or a place of business, recreation or other purposes.
4. BUILDING SEWER: The portion of a sanitary sewer line beginning at the plumbing or drainage outlet of any building or industrial facility and running to the lateral sewer.
5. CITY: City refers to the City in which the District facilities are located. The District has sewer facilities in the City of Daly City, and the City of Brisbane, CA.
6. COLLECTION SYSTEM: shall mean all facilities owned or controlled by the District for collecting, pumping, treating, and disposing of sewage (Except private sewers).
7. COMBINED SEWER: shall mean a sewer, which was designed to receive both surface runoff and sewage.
8. COMMERCIAL USER AND/OR INDUSTRIAL USER: (both private and public) shall mean any user of the sewage works of the District located on property or in structures not classified as a "single dwelling unit" or "multiple dwellings."
9. CONTRACTOR: shall mean an individual, firm, corporation, partnership, or association duly licensed by the State of California who shall do work for the District's acceptance.
10. COUNTY: shall mean the County of San Mateo, California.
11. DAY: shall mean a calendar day of 24 hours.
12. DISTRICT: shall mean the Bayshore Sanitary District (BSD). A map showing the District boundaries is on page A-06.
13. DISTRICT ENGINEER: as used in these specifications shall be taken to designate the party or parties authorized or employed by the District to observe completed work, and to observe their general compliance with plans, specifications, design and planning concept. Kennedy/Jenks Consultants, located at 2191 E. Bayshore Rd, Palo Alto, CA 94303, serves as the District Engineer.
14. DISTRICT MANAGER: shall mean the person or persons appointed by the Board to administer and enforce the rules and regulations of the District.

15. DWELLING: shall mean any house, duplex, apartment, commercial establishment, or any other building to be connected to a public or main sewer.
16. GARBAGE: shall mean solid wastes from the preparation, cooking, and dispensing of food and from the handling, storage, and sale of produce.
17. LATERAL SEWER: the portion of a sanitary sewer line within a public street or public right-of-way connecting a building sewer to the main sewer.
18. MAIN SEWER: A public sewer designed to accommodate more than one lateral sewer.
19. MULTIPLE DWELLING: shall mean a building containing two or more units for rental, lease, or similar legal instrument, for residential occupancy purposes, including, but not limited to the following: Hotels, Motels, Auto Courts, Trailer Courts, Mobile Home Parks, Apartment Houses, Duplexes, Rooming Houses, Boarding Houses, and Dormitories.
20. ORDINANCE: shall mean "Ordinances" adopted by the District and amendment thereto. Ordinances outline procedures to be followed in the design, construction, and use of sewerage facilities for the Bayshore Sanitary District.
21. OUTSIDE SEWER: shall mean a sanitary sewer beyond the limits of the District not subject to the control or jurisdiction of the District.
22. PERMIT: shall mean any written authorization required pursuant to this or any regulation of the District for the installation of any sewerage works.
23. PERSON: shall mean any human being, individual, firm, company, partnership, association and private or public and municipal corporation, the United States of America, the State of California, Districts, and all political subdivisions, governmental agencies and mandatories thereof.
24. PLUMBING SYSTEM: All plumbing fixtures and traps, or soil, waste, special waste, and vent pipes within a building and a to a point two (2) feet outside of the building foundation thereof.
25. PUBLIC NUISANCE: shall mean continued habitation of any building, or continued operation of any industrial facility in violation of the any of the District's ordinances, rules or regulations.
26. PUBLIC SEWER: shall mean a sewer lying within a street or easement, and which is controlled by or under the jurisdiction of the District.
27. SANITARY SEWER: A sewer which carries sewage and to which storm, surface, and ground waters are not intentionally admitted.
28. SERVICE LATERAL: SEE LATERAL SEWER
29. SEWAGE: shall mean a combination of water-carried wastes from residences, business buildings, institutions, and industrial establishments.
30. SEWAGE TREATMENT PLANT: shall mean any arrangement of devices and structures used for treating sewage.

31. SEWAGE WORKS: shall mean all facilities owned or controlled by the District for collecting, pumping, treating, and disposing of sewage (Excepting private sewers).
32. SEWER: shall mean a pipe or conduit for carrying sewage.
33. SIDE SEWER: The portion of a sanitary sewer beginning at the plumbing or drainage outlet of any building or industrial facility and terminating at the main sewer, which includes the building sewer and the lateral sewer together.
34. SINGLE DWELLING UNIT: shall mean the place of residence, detached or attached unit, that can be legally owned by the occupant or occupants, including, but not limited to, condominiums, townhouses, houses or similar design.
35. STANDARD SPECIFICATIONS: shall mean a set of documents containing design and construction standards for all sewerage works within the District (i.e., this set of documents).
36. STORM SEWER OR STORM DRAIN: shall mean a pipeline which carries storm and surface ground waters and drainage, but excludes sewage and polluted industrial wastes.
37. STREET: shall mean any public highway, road, street, avenue, alleyway, public place, public easement, or right of way.
38. TRENCHLESS REPLACEMENT: A method of sewer replacement in which existing sewers are replaced by means other than the conventional open-cut trench excavation.
39. USER: shall mean any owner, possessor, tenant, occupier, inhabitant, holder or person owning or occupying premises which are connected directly or indirectly to the sewage works of the District.
40. WASTEWATER FACILITIES: shall mean any part of the sewage collection, treatment, and disposal system of the District.

\*\*\* END OF SECTION A \*\*\*



**LEGEND**

- BOUNDARY BAYSHORE SANITARY DISTRICT BOUNDARY
- - - CITY LIMITS
- - - RIGHT OF WAY
- SANITARY SEWER
- SANITARY SEWER - SAN FRANCISCO

## SECTION B1 – GENERAL REQUIREMENTS

### B1.01 SCOPE

This section covers the general design requirements and design criteria applicable to the District's collection system.

### B1.02 DESIGN CALCULATIONS

Design calculations submitted for District review shall be in a neat, acceptable form, Design Calculation shall include the design date, stamp and signature or the registered Professional Engineer in the State of California supervising the work.

#### 1. When Required

Design calculations will be required for all mainline extensions including residential, subdivisions, commercial and industrial sewers or where, in the judgment of the District Engineer, they are necessary.

#### 2. Sewers and Pipelines

Design calculations for sewers and pipelines shall be presented in tabular form and shall include the following information for each section of sewer:

- a. Terminal manhole designations
- b. Ground elevation at each manhole
- c. Invert elevation at each manhole
- d. Length of sewer run
- e. Sewer size
- f. Pipe size
- g. Pipe slope
- h. Pipe capacity
- i. Incremental and cumulative tributary area
- j. Incremental and cumulative tributary population
- k. Incremental average and maximum domestic sewage flow
- l. Incremental infiltration allowance
- m. Cumulative design flow

n. Velocity at design flow

3. Pumping Station

Design calculations for pumping stations shall include soils data, structural design calculations, hydraulic calculations including the basis for average and peak flows, calculations for wet well volume, system curves indicating headloss versus flow rate, and individual and combined pump head-capacity curves.

B1.03 UNIT DESIGN FACTORS

1. Population Densities

Population densities for determining ultimate tributary population shall be as indicated in the appropriate general plans for the Cities of Daly City and Brisbane. Indicated densities shall be modified where conditions are known to be different. In the case of such modification, the applicant shall submit substantiating data.

2. Residential Sewage Flow

a. Per Capita Domestic Sewage Flow- the average dry weather per capita domestic flow shall be 70 gallons per day.

b. Domestic Flow Per Single Family Dwelling- the average dry weather flow per single family dwelling and/or equivalent shall be 200 gallons per day.

c. Ratio of Peak to Average Flow- the ratio of peak to average dry weather sewage flow is a function of the tributary population, and the tabulated values below shall be used.

Tributary Population	Ratio of Peak to Average Sewage Flow
1,000 and less	2.50
2,000	2.25
3,000	2.15
4,000	2.05
5,000	1.98
10,000	1.82
20,000	1.68
50,000	1.55

3. Acreage Flow

Unit loadings for special design guidance, subject to District review, are as follows:

	AVERAGE FLOW GALLONS PER ACRE PER DAY	PEAK FLOW GALLONS PER ACRE PER DAY
Commercial Acres	1,500	4,500
Industrial Areas	2,000	4,000

Indicated unit flows and peaking factors are typical and shall be modified where conditions are known to be different. In the case of such modification, the applicant shall submit substantiating data. Other industrial sewage flows will be evaluated on a case-by-case basis.

4. Infiltration

The calculated infiltration rate shall be 500 gallons per day per inch diameter per mile of length for all new sewers.

5. Inflow Sources

No inflow sources shall be discharged into the District's system. Inflow sources include rainwater, stormwater, groundwater, street drainage, subsurface drainage, roof drainage, yard drainage, and water from yard fountains, ponds, lawn sprays or swimming pools or any other uncontaminated water.

## SECTION B2 – GRAVITY SEWERS, FORCE MAINS, AND PUMPING STATIONS

### B2.01 SCOPE

This section covers basic design criteria and standards relating to gravity sewers, force mains, and pumping stations.

### B2.02 GRAVITY SEWERS

#### 1. Minimum Size Main Sewer

The minimum diameter for main sewers shall be 8-inches.

#### 2. Minimum Size Side Sewer

The minimum diameter for side sewers shall be 4-inches. For side sewers serving commercial or industrial buildings, or multiple family living units having more than three units, the minimum diameter shall be 6-inches.

#### 3. Minimum Slopes

The minimum slope of side sewers shall be 2 percent for 4-inch sewers, 1 percent for 6-inch sewers and 0.4 percent for 8-inch sewers. The minimum slope for main sewers shall be that required to obtain a velocity of 2 feet per second when the sewer is flowing full or one-half full. For the purpose of computing the velocity, the Manning's coefficient of roughness "n" shall be 0.013 for all sewers.

#### 4. Steep Slopes

Special design features may be required for main sewers installed on steep slopes. Depending upon conditions of the specific installation, such items as underdrains, check dams, special anchorage, or special pipe material may be required. Based upon data supplied, the District Engineer will assess each case and recommend certain special requirements.

#### 5. Minimum Depth

The minimum depth of cover for any public sewer shall be 3 feet. The standard depth of cover for any main sewer shall be 4 feet. If it is infeasible to obtain the standard depth of cover over a main sewer, the depth of cover over the sewer shall be between the standard and minimum depths. If it is infeasible to obtain the specified minimum depth, the sewer shall be constructed using pipe approved by the District Engineer or covered by a concrete cap for the entire length shallower than 3.0 ft., as approved by the District Engineer.

For side sewers, minimum depths of cover shall be as follows:

- a. At the property line - 3 feet.

6. Manholes

Manholes shall be provided at every line or grade change and at every point where the sewer changes size. In addition, manholes shall be provided at maximum intervals of 300 feet on sewers 21-inches in diameter and smaller, and 500 feet on sewers larger than 21-inches in diameter. Gasketed manhole couplings are required at all locations where PVC pipe is used.

7. Flushing Inlets or Cleanouts

Flushing inlets or cleanouts will be permitted upon approval by the District Engineer only on dead-end runs where the length of sewer downstream to the next manhole is less than 150 feet.

8. Types of Pipe Permitted

Complete specifications for all approved pipe materials are given in Article C4.02. Limitations on the use of specific pipe materials are listed below.

- a. Gravity Sewers. Corrugated metal, vitrified clay pipe, and reinforced concrete pipes will not be permitted except where specifically approved by the District Engineer. Asbestos cement pipe is not permitted.
- b. Force Mains. In general, any pressure pipe material listed in Article C4.02 may be used. Asbestos cement pressure mains are not permitted.

The District Engineer shall be the sole judge as to what types of pipe may, or may not, be used for each specific project.

9. Cleanouts

Each side sewer shall have a cleanout installed on the property within 5 feet of the property line.

9. Back Flow Prevention Device

Side sewers connecting premises having a finished floor elevation twelve (12) inches or less above the top elevation of the nearest upstream structure (manhole) shall have a Back Flow Prevention Device on them unless the Ordinances of Daly City or Brisbane are more restrictive. The more restrictive ordinances shall be followed. Construction, operation, and maintenance of back flow prevention devices are the sole responsibility of the property owner.

### B2.03 FORCE MAINS

Force mains shall be designed using a Hazen and Williams coefficient for roughness "C" of 120.

### B2.04 PUMPING STATIONS

Certain basic requirements for pumping station design are listed below.

1. Stand-by Power

Each pumping station must be equipped with a source of stand-by or emergency power which will automatically start upon the failure of external power.

2. High Water/Power Failure Alarms

Each pumping station must be equipped with the necessary electrical equipment to transmit high water and/or power failure alarms over a leased telephone circuit to a remote location.

3. Architectural Considerations

Each pumping station must blend harmoniously with neighboring structures. Architectural considerations shall include superstructure, ornamental fence, and landscaping.

4. Standby Pumps

Each pumping station must have a minimum of two pumps with sufficient pumping capacity to discharge the peak wet weather flow of the facility with one pump out of service.

\*\*\* END OF SECTION B \*\*\*

## SECTION C1 – SPECIAL CONDITIONS AND CONSTRUCTION REQUIREMENT

### C1.01 ARRANGEMENT OF SPECIFICATIONS

The Construction Standards are arranged in sections covering various phases of the work as follows:

<u>SECTION NUMBER</u>	<u>TITLE</u>
C1	Special Conditions and Construction Requirements
C2	Earthwork
C3	Concrete Work
C4	Pipelines and Sewers
C4B	Trenchless Replacement
C5	Resurfacing
C6	Sewer Line Cleaning
C7	Sewer Flow Control
C8	Television Inspection
C9	Smoke Testing

### C1.02 STANDARD SPECIFICATIONS

Whenever Standard Specifications, codes, or regulations are referred to, they shall be the latest edition of those specifications, codes, or regulations, and they shall be a part of these standards insofar as they apply. Such documents from the following sources may be referred to herein:

American Association of State Highway and Transportation Officials (AASHTO)  
American Concrete Institute (ACI)  
American Gas Association (AGA)  
American Institute of Electrical Engineers (AIEE)  
American Institute of Steel Construction (AISC)  
American Iron and Steel Institute (AISI)  
American National Standards Institute (ANSI)  
American Public Works Association (APWA)  
American Society for Testing and Materials (ASTM)  
American Society of Civil Engineers (ASCE)  
American Society of Heating, Refrigeration & Air Conditioning Engineers (ASHRAE)  
American Society of Mechanical Engineers (ASME)  
American Water Works Association (AWWA)  
American Welding Society (AWS)  
State of California, Department of Transportation (CALTRANS)  
State of California, Division of Occupational Safety and Health (CAL OSHA)  
Federal Environmental Protection Agency (EPA)  
Federal Specifications (Fed. Spec)  
National Electrical Code (NEC)  
National Electrical Manufacturers Association (NEMA)  
National Electric Safety Code (NESC)  
National Lumber Manufacturers Association (NLMA)  
Underwriter's Laboratories, Inc. (UL)  
Uniform Building Code (UBC)  
Uniform Plumbing Code (UPC)

### C1.03 EXISTING UTILITIES

The Contractor shall maintain all water and sewer lines, lighting, power and telephone conduits, structures, house connection lines and other surface and subsurface structures of any nature that may be affected by the work. Should it be necessary in the performance of the work to disconnect or reroute any underground utility, or should any such utility be damaged during construction, all expenses of whatever nature arising from such disconnection, rerouting, damage or replacement shall be borne by the Contractor.

The District reserves the right, if requested by the utility owner, to require the Contractor to move or maintain any such conflicting utility at the Contractor's expense.

The right is reserved by the State, the County, the City or District, and by owners of public utilities, to enter upon any street or road right-of-way, or easement for the purpose of maintaining their property and for making necessary repairs or changes caused by the work.

### C1.04 DUST CONTROL

Reasonable means shall be provided to prevent a nuisance occurring due to dust from areas under construction. Such means shall include watering and sweeping, and in cases of extreme nuisance, light oiling of the affected surface.

### C1.05 ENCROACHMENT PERMITS

Before any construction commences, the Contractor shall obtain and provide the District with a copy of any Encroachment Permit from the City in which the work is located. All work done in the City streets shall be subject to the requirements of the City as included in the Encroachment Permit.

### C1.06 WORK WITHIN RAILROAD AND HIGHWAY RIGHT-OF-WAYS

Construction within the Railroad and State Highway right-of-ways shall be subject to utility Encroachment Permits provided by the Railroad Company or CALTRANS.

### C1.07 WORK IN EASEMENTS

Before Construction commences on an easement, the District must have in its possession a signed copy of the Deed of Easement. Should an area greater than that included in the easement be required for construction purposes, the Contractor shall negotiate for use of the additional area from the property owners. Fences, structures, and landscaping within the easement which are removed and/or damaged by the contractor shall be restored as nearly as possible to their original condition at the Contractor's expense. Any damage caused by the Contractor's operations shall be the Contractor's responsibility.

### C1.08 OPERATION OF EXISTING FACILITIES

Existing collection system facilities shall be maintained in service at all times. The Contractor shall devise acceptable methods for maintaining continuity of service equal to what which existed prior to construction.

Existing sewer manholes to be abandoned shall be filled with sand, and their frames and covers shall be salvaged by the Contractor. These District owned frames and covers shall

be delivered by the Contractor to a location within the District designated by the District Engineer.

The Contractor shall notify the District in writing at least two days in advance before a new sewer line is to be connected to an existing sewer.

To prevent dirt, rocks and other debris from entering the collection system, the Contractor shall install and maintain acceptable grit interceptors in new and existing manholes and sewer lines designated by the District Engineer.

#### **C1.09 SAFETY AND HEALTH PROVISION**

The Contractor shall conform to all applicable occupational safety and health standards, rules, regulations and orders established by Federal and State Agencies.

All working areas utilized by the Contractor to perform work during the hours of darkness, shall be lighted to conform to the minimum illumination intensities established by California Division of Occupational Safety and Health Construction Safety Orders. (CAL OSHA).

All lighting and fixtures shall be mounted and directed in a manner to preclude glare to approaching traffic.

Specific attention is directed also to OSHA safety rules, regulations and precautions to be taken by the Contractor before entering sanitary sewer manholes and other manhole subsurface structures with respect to physical and chemical hazards which may be present. In addition the Contractor shall meet the following requirements.

1. All trenches, manhole pits, etc. shall be covered at the end of the day and made safe by the use of plates, barricades, etc.
2. No work will be performed within the drip-line of any tree without special authorization.
3. No noise levels shall be beyond the range allowed by the controlling jurisdiction.
4. When by-pass pumps are used, take all precautions possible to prevent harm to the public, i.e. fences, barricades.
5. No person shall enter a manhole without first sampling the air and providing all OSHA required protection.

#### **C1.10 HAZARDOUS MATERIALS**

If the Contractor encounters material on the site which it reasonably believes may contain asbestos, polychlorinated biphenyl (PCB) or other suspected hazardous materials, the Contractor shall stop work in the affected area and shall notify the District. The Contractor shall proceed with analysis, removal, and disposal of the material according to applicable federal and state guidelines.

## SECTION C2 – EARTHWORK

### C2.01 SCOPE

Earthwork includes all plant, labor, equipment, appliances, and materials as required or necessary to clear and grub, sheet and shore, dewater, excavate, trench, fill, backfill, and grade for the construction of structures, sewers, and graded areas.

### C2.02 GENERAL REQUIREMENTS

#### 1. Control of Water ( Dewatering)

The Contractor shall furnish, install, and operate all necessary machinery, appliances, and equipment to keep excavations reasonably free from water during construction and he shall dispose of the water so as not to cause injury to public or private property, or to cause a nuisance or a menace to the public. He shall at all times have on hand sufficient pumping equipment and machinery in good working condition for all ordinary emergencies and shall have available at all time competent mechanics for the operation of all pumping equipment.

The control of ground water shall be such that softening of the bottom of the excavation, or the formation of "quick" conditions or "boils" shall be prevented. Dewatering systems shall be designed to operate so as to prevent the removal of the natural soils.

During excavation, installation of sewers, placing of trench backfill, and the placing and setting of concrete, the excavation shall be kept reasonably free of water. When specified, the static water level shall be drawn down below the bottom of the excavation so as to maintain the undisturbed state of the natural soil and to allow the placement of the backfill to the required density. The dewatering system shall be installed and operated so that the ground water level outside the excavation is not reduced to the extent that would damage or endanger adjacent structures or property.

The release of ground water to its static level shall be performed in such a manner as to maintain the undisturbed state of the natural foundation soil, prevent disturbances of compacted backfill, and prevent flotation or movement of structures and sewers.

#### 2. Excavated Material

Arrangements for disposing of excess excavated material unsuitable for backfill shall be made by the Contractor at his own expense. Excavated material suitable for backfill shall be stored temporarily in such manner as will facilitate work under the contract.

#### 3. Shoring, Sheet piling and Bracing

Pursuant to State Law, all open excavations greater than four feet in depth shall be constructed with bracing, shoring and sheeting or other equivalent method designed to protect life and limb.

Where sheet piling, shoring, sheeting, bracing, or other supports are necessary, they shall be furnished, placed, maintained and removed by the Contractor. At all times the rules of the Department of Industrial Relations, California Labor Code Sec. 6705, with respect to excavation and construction shall be strictly observed. Sheet piling

and other supports shall be withdrawn in such manner as to prevent subsequent settlement of the pipe, or additional backfill on sewer lines, which might cause overloading.

The design, planning, installation, and removal of all shoring, sheeting, and bracing shall be by a registered engineer and accomplished in such a manner as to maintain the required excavation and trench section and the undisturbed state of the soil adjacent to the trench and below the excavation bottom. The use of the horizontal strutting below the pipe barrel or the use of the pipe as support for trench bracing will not be permitted.

4. Removal of Obstructions

The Contractor shall remove, or cause to be removed, all trees, including stumps, fences, and all structures where the proper construction and completion of the work require their removal. The Contractor shall also remove all rock, stones, debris, and obstructions of whatsoever kind or character, whether natural or artificial, encountered in the construction of the work.

Material that is removed hereinabove specified, and is not to be incorporated in the improvement being constructed, shall be disposed of according to applicable laws by the Contractor at his expense.

C2.03 EXCAVATION AND BACKFILL FOR STRUCTURES

1. Excavation

The site shall be cleared of all natural obstructions, pavement, utilities, and other items which will interfere with construction. Unless otherwise specified, any method of excavation may be employed which, in the opinion of the Contractor, is considered best.

Ground shall not be dug by machinery nearer than 3 inches from any finished subgrade without the express approval of the District Engineer. The last 3 inches shall be removed without disturbing the subgrade. Should the excavation be carried below the required lines and grades because of the Contractor's operations, the Contractor shall refill such excavated space to the proper elevation in the accordance with the procedure specified for backfill, or if under footings, the space shall be filled with concrete as directed by the District Engineer.

Where, in the opinion of the District Engineer, the undisturbed condition of the natural soil is not adequate to support the structure, The District Engineer shall direct the Contractor to overexcavate to adequate supporting soil and refill the overexcavated space as directed by the District Engineer. The quantity and placement of such material shall be as ordered by the District Engineer.

Excavation shall extend a sufficient distance from walls and footings to allow for placing and removal of forms, installation of services, and for inspection, except where concrete is authorized to be deposited directly against excavated surfaces or against existing concrete surfaces.

## Backfilling

After completion of foundation footings and walls, and of other construction below the excavation of the final grade, all forms shall be removed and the excavation shall be cleaned of all debris. Substructure surfaces shall be waterproofed if required and as specified. Sheet piling shall not be removed until backfilling operations are completed.

Backfill shall be composed of clean natural material or imported material acceptable to the District Engineer. Backfill shall be placed in layers not exceeding 8 inches in loose depth and compacted by tamping or rolling. Jetting is not permitted.

Regardless of the method of compaction, the final density shall not be less than 90 percent of maximum density at optimum moisture as determined by AASHTO T180 or by California Test 216. The final relative density shall be 95 percent for the upper 3 feet of the backfill and in paved and/or traffic areas.

## C2.04 EXCAVATION AND BACKFILL FOR SEWER LINES

### 1. Excavation

Unless otherwise indicated on the plans or in the special conditions, excavation for sewer lines shall be by open cut. Trenching machines may be used except where their use will result in damage to existing facilities. For sewers to be constructed on filled areas, the entire area fill shall be placed and compacted to at least five feet above the proposed sewer invert before the sewer trench is excavated.

Trenches shall be excavated at least 4 inches below the barrel of the pipe and the bottom refilled with select imported material of the type specified under Article C2.04 2a-Bedding Material.

The maximum allowable width of trench measured at the top of the pipe shall be the outside diameter of the pipe, exclusive of bells and collar, plus 24 inches, and such maximum width shall be inclusive of all trench timbers. A minimum of 6 inches shall be maintained between pipe and trench wall. Whenever the maximum allowable trench width is exceeded for any reason, the Contractor shall embed or cradle the pipe in a manner satisfactory to the District Engineer.

Excavation 4.0 feet and deeper shall be supported as set forth in the rules, orders and regulations of the California Department of Industrial Relations, Division of Industrial Accidents. Sheetpiling and other timbers shall be withdrawn so as to prevent subsequent settlement of the pipe, or additional backfill that might overload the pipe. No sheeting will be withdrawn from below the top of the pipe after completion of backfill to that level.

### 2. Trench Backfill

- a. Bedding Material. After the pipe has been properly laid and inspected, select backfill material shall be placed under and around the pipe to a depth of 12 inches above the top of the pipe and shall be thoroughly consolidated to a final density of at least 90 percent of maximum density as determined by AASHTO T180 or by California Test 216. Consolidation shall be obtained by mechanical means. The select material shall be free from organic matter, and

of such size and gradation that the desired compaction can be readily attained. The size of gradation shall fall within the following limits.

Bedding Material: Granular Bedding Requirements (ASTM D448 Size #67 and California Test 202).

<u>SIEVE SIZE</u>	<u>PERCENTAGE PASSING SIEVE</u>
1 inch	100
3/4"	90-100
3/8"	20-55
No. 4	0-10
No. 8	0-5

Bedding Material: Sand Alternative

Sand meeting the following requirements is an acceptable alternative to the granular bedding. Sand shall be free from clay or organic material, suitable for the purpose intended, and shall be of such size that 90 percent to 100 percent will pass a No. 4 sieve and not more than 5 percent will pass a No. 200 sieve.

- b. Subsequent Backfill. Above the level of bedding material, the trench shall be filled with structural backfill material as designated on the Plans and Specifications. Backfill shall be placed in layers not exceeding 8 inches in loose depth and compacted by mechanical means to a density of not less than 95 percent maximum density at optimum moisture as determined by California Test 216 or 231 (Nuclear Gauge).

The size of gradation shall fall within the following limits:

3/4" Class 2 AB (CalTrans Standard Specifications Paragraph 26-1.02 A)

<u>SIEVE SIZE</u>	<u>PERCENTAGE PASSING SIEVE</u>
1-1/2"	100
3/4"	87-100
No.4	30-65
No.30	5-35
No.200	0-12

The finishing of the roadway (aggregate base and asphalt concrete) shall match the existing finishing and be constructed to the requirements of the applicable City.

## C2.05 CLEAN UP

After completing all piping earthwork, the Contractor shall leave the site in a neat and clean condition, doing such grading as is required by the Drawings, or if not called for, to restore the site to its original shape and configuration. Any existing features, improvements, structures, and other facilities damaged or affected by the work shall be replaced, repaired, or restored to their original condition or better.

## SECTION C3 – CONCRETE WORK

### C3.01 SCOPE

Concrete work includes the construction of all manholes, footings, slabs, walls, supports, and other concrete items, complete with metal reinforcement.

### C3.02 MATERIALS

#### 1. Cement

Cement shall conform to ASTM C150 Type II. Only one brand of cement shall be used for exposed architectural concrete throughout one structure or composed element. Insofar as possible, all cement used in the work shall be taken from stock bins at the place of manufacture.

Cement brought to the site of the work shall at all times be suitably stored and protected from exposure to the atmosphere. In the event the cement show signs of deterioration, it shall be removed from the work unless additional tests show that it conforms to the requirements stated above.

#### 2. Aggregate

Fine and coarse aggregate for concrete shall conform to ASTM C33 or to CalTrans Standard Specifications Section 90-2.02 "Aggregates" with the appropriate Test Methods designated therein. In reinforced concrete maximum size of aggregate shall be 1-1/2 inches except in slabs and walls 8 inches or less where 3/4 inch maximum aggregate shall be used.

#### 3. Water

Water shall be any potable water, clean and free from injurious amounts of oil, acid, alkali, and organic materials.

#### 4. Reinforcing Steel

Reinforcing steel shall consist of polyethylene-coated deformed bars and wire reinforcement. Steel shall conform to ASTM A615 Grade 60. Deformation shall conform to ASTM A615. Wire reinforcement shall conform to ASTM A185, with mesh and wire sizes as indicated on the plans.

#### 5. Waterstops

Waterstops embedded in the concrete shall be 6-inch polyvinyl chloride. A sample shall be submitted to the District Engineer for approval. Waterstops shall be installed in as long lengths as possible. Joining splices and corners shall be heat fused in accordance with manufacture's recommendations.

Waterstops shall be used around plastic pipe that penetrate concrete walls or manhole bases. Waterstops for each pipe type shall be as recommended by the pipe manufacturer.

6. Joint Filler

Performed joint fillers shall conform to ASTM D1751.

7. Joint Sealant

- a. General: For below ground installation or in areas not subject to architectural consideration, joint sealers shall be of the mastic type. For above ground installations or where architectural appearances are important joint sealers shall be of the rubber sealant type.
- b. Underground Sealant: For sealing non-moving underground joints, construction joints and grooves in slabs, the sealant shall be "Permapol RC-550 Sealant" as manufactured by Products Research and Chemical Corporation, Gloucester City, New Jersey, and distributed by Sherwin Williams Company, Emeryville, California, or equal. The product is a two-component, nonsag, elastomeric epoxy sealant. Color shall be black. Application shall be as recommended by the manufacture.
- c. Aboveground Sealant: For sealing exterior joints subject to structural movement, and for weathertight joints between various materials the sealant shall be "PRC Rubber Caulk 7000 Sealant" as manufactured by Products Research and Chemical Corporation, Gloucester City, New Jersey and distributed by Sherwin Williams Company, Emeryville, California, or equal. The product is a one-part low modulus, polysulfide elastomer. Color shall match material being applied to. Application shall be as recommended by the manufacture.

C3.03 CONCRETE

1. Quality

Concrete shall be composed of cement, natural or crushed aggregate and water proportioned and mixed as hereinafter specified. Pozzolan and water reducing air-entraining agent shall be used when specified by the District Engineer. The exact proportions of cement and aggregate shall be such as to produce a workable, strong, dense, impermeable concrete having approximate consistency and strength. All concrete work shall be accomplished in compliance with ACI standards.

- a. Consistency: The quantity of water required for the proper consistency of the concrete shall be determined by the slump test, in accordance with ASTM C143. Slump allowances shall be as follows:

Vertical wall sections, columns: maximum slump, 4 inches plus or minus 1-inch tolerance.

Floor slabs, beams, and footings: maximum slump, 3 inches plus or minus ½ inch tolerance.

- b. Strength: Compressive strength shall be determined at the end of 28 days on standard 6 x 12 inch test cylinders in accordance with ASTM C143. The minimum compressive strength shall be 3500 psi.
- c. Tests: Test shall be made by the Contractor of the materials and of the

resulting concrete at such intervals as deemed necessary by the District Engineer. The concrete mix shall be changed whenever, in the opinion of the District Engineer such change is necessary or desirable to secure the required workability, density, impermeability, and strength.

2. Batching

Concrete batching equipment shall be provided to determine and to control accurately the relative amounts of cement, water, sand, and each individual size of coarse aggregate entering into the concrete. sand, cement, and coarse aggregate shall be measured by direct weighing.

Water shall be determined by direct weighing or by volumetric measurement. Equipment and its operation shall be subjected at all times to the approval of the District Engineer.

3. Mixing

When authorized by the District Engineer, concrete may be mixed in a batch mixer of approved type, which will insure a uniform distribution of the materials throughout the mass, so that the mixture is uniform in color and homogenous. The mixer shall be equipped with a suitable charging hopper, a water storage and water measuring device controlled from a case which can be kept locked and so constructed that the water can be discharged only while the mixer is being charged. The entire contents of the mixing drum shall be discharged before recharging. The mixer shall be cleaned at frequent intervals while in use. The volume of mixed material per batch shall not exceed the rated capacity of the mixer.

4. Transit Mixed Concrete

Transit mixed concrete shall be used, provided that all of the above requirements as to batching, mixing, and placing are complied with, and provided further that the concrete shall be placed within 2 hours after water is first added to the batch. Transit mixed concrete shall comply with all provisions of ASTM C94.

C3.04 MORTAR AND GROUT

Mortar shall consist of 1 part by volume of cement and 1½ parts by volume of sand. Grout shall consist of 1 part by volume of cement and 1 part by volume of sand.

Mortar and grout shall be mixed in a watertight mixing box. The material must be thoroughly mixed dry until the mass assumes a uniform color and then sufficient water added to bring the mixture to a workable consistency. No mortar or grout which has begun to set shall be used, and no retempering thereof will be permitted.

C3.05 PRECAST CONCRETE MANHOLES

Manholes shall be precast concrete. Materials shall conform to ASTM C478 and CalTrans Standard Specifications Section 90-2 "Materials".

Pipe stubs for lateral sewers shall be built into the structures as required; the outer ends shall be sealed securely by cap or stopper of the same material as the branch. In laying pipe up to the structures, the pipe shall not project beyond the inside of the wall of the structure and in no case shall the socket of a vitrified clay pipe be built into wall of structure.

Joints in precast manhole shafts shall be made by buttering with mortar the joint space previously laid. After placing the next section, excess mortar squeezed from joint shall be removed and the joint area troweled smooth. Special precautions shall be taken to see that the entire joint space is filled with mortar.

Gasketed manhole couplings shall be used where any pipes enter or leave the manhole.

Joints for precast manhole pipe sections may also be sealed by using "Ram-Nek", a preformed plastic material.

### C3.06 SPECIAL CONCRETE STRUCTURES

#### 1. Forms

Forms for concrete construction shall be of wood or steel. For surfaces not exposed to view, such as backfilled walls, the forms may be metal or smooth boards free from large or loose knots. For other surfaces, the forms shall be waterproof plywood, tongue and groove sheeting, or metal. All forms shall be true, rigid, tight, thoroughly braced, and sufficiently strong to carry all loads.

Bolts, rods, or single wires shall preferably be used for internal ties and if used shall be so arranged that when the forms are removed no metal shall be within 1 inch of any surface. Twisted wire ties will not be permitted in the forms for any wall later to be subject to water pressure. The Contractor shall take due precautions to prevent future leakage or seepage along ties in all walls which will be subject to water pressure. Ties used in all such walls shall be cut back from the face of the wall at least 1 inch and the resulting holes pointed up with 1:1½ mortar, cement to sand by volume or non-shrink epoxy grout.

#### 2. Placing Reinforcing Steel

Reinforcing steel, before being positioned, shall be cleaned thoroughly of mill and rust scale or other coatings that will destroy or reduce the bond. Reinforcement appreciably reduced in section shall be rejected. Where there is delay in depositing concrete, reinforcement shall be inspected and, when necessary, cleaned. All bars shall be bent cold, shall be positioned accurately, and secured against displacement by using annealed iron wire or suitable clips.

#### 3. Inserts

Where pipes, castings, or conduits are to pass through concrete walls, the Contractor shall place such pipes or castings in the forms being poured in the concrete, or in special cases, with the express consent and approval of the District Engineer, shall build approved boxes in the forms to make openings for subsequent insertion of such pipes, castings, or conduits. To withstand water pressure and to insure watertightness around openings so formed, the boxes or cores shall be provided with continuous keyways with waterstops all around, and they shall have a slight flare to facilitate grouting and the escape of entrained air during grouting.

Additional reinforcement shall be provided around such openings, if large, to meet the approval of the District Engineer. The pipes, castings, or conduits as specified shall be grouted in place by pouring in grout under a head at least 4 inches. The grout shall be poured and rammed or joggled into place to completely fill the space between the pipes, castings, or conduits, and the sides of the openings, so as to

obtain the same watertightness as the wall itself. The grouting materials so placed shall be surfaced when the forms are removed to give a uniform appearance to the wall if such wall will be exposed to view.

The Contractor shall accurately set and hold in exact position the forms until the concrete is poured, and set all thimbles, special castings, or other metal parts that are embedded in the concrete. He shall furnish and accurately set all inserts and anchors or other bolts necessary for the attaching of piping, valves and equipment.

4. Depositing Concrete

Concrete shall not be placed until the forms and reinforcements have been approved by the District Engineer.

5. Curing

Unformed concrete surfaces shall be covered with wet burlap mats as soon as the concrete has set sufficiently and shall thereafter be kept wet under burlap until backfilled or for 14 days after the concrete is placed. Formed surfaces, both interior and exterior, shall be similarly water-cured under burlap mats or by water sprays beginning as soon as the forms are stripped. At the option of the Contractor, concrete surfaces may be cured by the curing-compound method as defined below. Where wooden forms are used they shall be wetted immediately after the concrete has been placed and shall be kept moist until removed, or they may be treated with an approved form sealer before pouring.

Concrete curing compounds, if their use is permitted by the District Engineer, shall be of a nature and composition not deleterious to concrete. The curing compound shall be of a standard and uniform quality ready for use as shipped by the manufacturer. At the time of use, the curing compound shall be in a thoroughly stirred condition. Curing compound shall not be diluted by the addition of solvent or thinners or be altered in any manner without the specific approval and in a manner prescribed by the manufacturer.

The curing compound shall, when tested in accordance with ASTM C156, be effective in limiting the water loss in the concrete test specimens to 3½ percent when applied at the coverage rate recommended by the manufacturer. Any compound proposed by the Contractor shall be tested by a recognized testing laboratory at the Contractor's expense, and 3 certified copies of the test report shall be furnished to the District Engineer.

Curing compound shall form a continuous, unbroken membrane which will adhere to moist concrete and which will not peel from the surface or show signs of deterioration within 30 days after application under actual weather and working conditions.

The compound shall be sufficiently transparent and free from color so that there will be no permanent change in the color of the concrete. The compound shall contain however, a temporary hue of sufficient color to make the membrane clearly visible for a period of at least 4 hours after application.

6. Protection and repair of Concrete Construction

All surfaces shall be protected against injury. During the first 72 hours after placing the concrete, wheeling, working, or walking on the concrete shall not be permitted. All slabs subject to wear shall be covered with a layer of sand or other suitable material as soon as the concrete has set.

No concrete shall be placed when it is raining. All concrete placed within the preceding 12 hours of a rain shall be protected with waterproof canvas or other suitable coverings.

All concrete construction shall be protected from excessive loading. Installation of mechanical and electrical equipment shall be accomplished by employing shores, bearing places, frames, cranes, and temporary beams.

Immediately after the removal of forms all concrete shall be inspected, and all poor joints, rough sections, or rock pockets containing loose materials shall be repaired by cutting back to solid concrete and making an opening of such size and shape as will form a 1 inch key for cement mortar fill. All form tie holes and small imperfections shall be kept wet for 2 hours and then coated with neat cement paste. The fill for small imperfections and form ties shall consist of cement mortar composed of 1 part cement well mixed with 1½ parts of fine aggregate by volume and just enough water so that the mortar will stick together on being molded into a ball by slight pressure of the hands. This mortar shall be thoroughly compacted into place. Where the area and volume of defective concrete is large, it shall be repaired by reforming the surface and filling the opening with concrete. For such major repairs, the fillings shall be reinforced and doweled securely to old concrete and shall be neatly finished to match the surface, color, and texture of the adjacent concrete. All patches shall be kept damp for 7 days.

Where the work requires concrete of existing structures to be removed, the existing concrete and steel shall be cut accurately to the line required under the supervision of the District Engineer. The cutting shall be accomplished in a manner that preserves, free from cracks or other injuries, those parts of the existing structure that are to remain. Where the cut surface is to be left exposed, it shall be cleaned, sprayed with water, faced with 1:1½ mortar, and finished to match adjacent surfaces.

7. Finished or Formed Surfaces

All finished or formed surfaces shall conform accurately to the shape, alignment, grades, and sections required. The finished surface shall be free from fins, bulges, ridges, offsets, honeycombing, or roughness of any kind, and shall present a finished, smooth continuous hard surface. All sharp angles shall be rounded or beveled. Any form surface to be painted shall be free of any material that will be detrimental to the paint.

## SECTION C4 – PIPELINES AND SEWERS

### C4.01 SCOPE

Pipelines and **Sewers** include the furnishing, installing, and testing of pipe, pipe supports, anchors, fittings, valves, specials, and all necessary appurtenances to make the work complete and operable.

Attention by the Contractor is directed to Article C1.09 Safety and Health Provisions, of these Specifications with respect to CAL OSHA rules and regulations to follow before entering manholes.

### C4.02 MATERIALS

#### 1. Scope

All pipe materials which may be used are covered under this section. The inclusion of all acceptable material does not infer that any of the materials listed below may be used on any project for any set of conditions. Refer to Article B2.02 of these District Standard Specifications for limitations on the use of various types of pipe materials. Typically, lateral sewers shall be of the same material as the main sewer to which they are connected.

The materials listed below apply to the main sewer and the lateral sewer. The materials for the building sewer shall conform to the requirements of the City of Brisbane or the City of Daly City Building Department as appropriate.

#### 2. Vitrified Clay Pipe and Fittings

Vitrified Clay pipe (VCP) and fittings when permitted for use by the District Engineer shall be extra strength, unglazed, conforming to ASTM C700, and shall be furnished with bell and spigot ends or plain ends.

Pipe joints shall be of mechanical flexible compression type. Joints for bell and spigot pipe shall be made of plasticized polyvinyl chloride compound, bonded to the pipe, molded, and cured to uniform hardness so as to form a tight coupling when assembled. Joints for bell and spigot pipe shall be Wedge lock and Speed Seal Mainline. Joints for plain end pipe shall be Band seal as manufactured by Mission Clay Products Company or equal. Rubber couplings are generally not allowed on main sewers unless approved by the District Engineer.

#### 3. Plastic Pipe

Plastic pipe, fittings and joint materials specified herein consist of Poly-Vinyl Chloride, hereinafter referred to as PVC and Polyethylene, hereinafter referred to as HDPE. All materials incidental to plastic pipe installations such as gaskets, joint lubrications, cement, etc., shall be supplied by the pipe manufacturer. All plastic pipes required in odd lengths shall be cut using a proper cutting tool and guide that insures true line cut on planes perpendicular to the pipe axis. No bevel cuts for pipeline alignments will be permitted.

The inside diameter of an installed section of plastic pipe shall not be allowed to deflect more than five (5%) percent. The pipe deflection shall be checked by means of a deflection gauge in the presence of the District Engineer after the placement of all trench backfill, aggregate subbase (if specified) but prior to installation of aggregate base and/or asphalt concrete.

a. Poly-Vinyl Chloride Pipe (PVC)

All PVC pipe and fittings shall, at a minimum, conform to the requirements AWWA C900 Class 150 PVC (SDR18). Class 200 PVC (SDR 14), may be required under special circumstances. No solvent cement joints will be permitted.

All PVC pipe entering or leaving a concrete structure shall have a rubber sealing gasket, as supplied by the pipe manufacturer, firmly seated perpendicular to the pipe axis, around the pipe exterior and cast into the structure base or near the structure wall center as a water stop. The water stop may also consist of a manhole coupling with rubber sealing rings cast into structure base.

PVC pipe joining may occur at any convenient distance beyond and/or between structures.

PVC force-laterals shall be as approved by the District Engineer.

b. Polyethylene Pipe (HDPE)

Polyethylene pipe shall be HDPE SDR 17 and conform to the specifications of ASTM D3350. The polyethylene pipes meet the PE345434C cell classification per ASTM 3350.

The polyethylene pipe shall provide leak-free, butt-fused connections suitable for the purpose intended. Polyethylene pipe fittings shall be fused to the pipe.

Force-lateral fittings to be used with 1 1/4-inch to 1 1/2-inch HDPE shall be the compression type, shall be of commercial quality, and shall be as recommended by the pipe manufacture. Fittings and pipe sections greater than 1 1/2-inch diameter shall be joined by fusion or by using a flanged joint.

A Certificate of Compliance for the polyethylene pipe shall be furnished to the District Engineer, upon request.

HDPE force-laterals shall be as approved by the District Engineer.

Repairs for HDPE pipe shall utilize an electrofusion coupling on one or both ends and butt-fusing the other, as necessary.

4. Reinforced Concrete Sewer Pipe

Reinforced concrete sewer pipe when permitted for use by the District Engineer, shall conform in materials, design, manufacture, testing and inspection to the requirements of ASTM C76 for nonpressure type and of AWWA C302 for pressure pipe or nonpressure pipe. Class D-load shall be as required by the service.

Joints shall be of rubber gasket type using either a bell and spigot joint design or a double spigot and joint sleeve design using a fiberglass reinforced collar. In either case, the joint shall be so designed that the gasket, or gaskets, shall not be required to support the pipe but shall keep the joint tight.

Fittings shall be fabricated of steel cylinders with cement mortar lining and coating and shall be equal in strength to the abutting pipe sections. The design of all fittings shall be as approved by the District Engineer.

1. Manholes

Manholes shall meet the requirements of ASTM C478, and shall have an eccentric cone with a minimum wall thickness of 4" for 48-inch diameter manholes, and 5" for manholes larger than 48 inches in diameter.

2. Frames and Covers

Frames and covers will be constructed of cast iron meeting the requirements of ASTM A48, Class 30B. They shall be coated with a black bituminous paint and be marked and noted in the Standard Details.

3. Backflow Prevention Device

The type of Backflow Prevention Device shall conform to the Technical Specifications of the City of Daly City or the City of Brisbane as appropriate.

#### C4.03 INSTALLATION

1. Pipe Laying

Pipe laying shall include the installation and jointing of the pipe. Pipe shall be laid with uniform bearing under the full-length pipe. In general, pipe laying shall proceed upgrade with the spigot ends of the bell and spigot pipe pointing in the direction of the flow. Each piece shall be laid true to line and grade and in such manner as to form a close concentric joint with the adjoining pipe and to prevent sudden offsets in the flow line. As the work progresses, the interior of the sewer shall be cleared of all dirt and debris. Where cleaning after laying is difficult because of small pipe size, a suitable swab or squeegee shall be kept in the pipe and pulled forward past each joint immediately after jointing has been completed. Pipe shall not be laid when the condition of the trench or the weather is unsuitable. At times when work is not in progress, open ends of pipe and fittings shall be closed.

2. Pipe Jointing

a. Vitrified Clay Pipes: For vitrified clay pipe with flexible compression joints, the mating surfaces shall be wiped clean of dirt and foreign matter, and an approved lubricant as recommended by the pipe manufacturer shall be applied to the joint surfaces. The spigot shall then be positioned inside the bell and the joint shoved home. For smaller diameter pipe this operation may be done by hand, but on large diameter pipe a lever attachment, or a bar cushioned with a wooden block, shall be used to shove the joint into place.

Rubber Band-Seal joints shall be made in accordance with the manufacturers' instructions and only installed where permitted by the District Engineer.

- b. PVC Pipes: PVC gaskets on the bell ends shall be wiped clean and lubricated with a lubricant acceptable to the manufacturer. Spigot ends shall be clean, free of burrs and marked at the point of full penetration. The spigot joint shall be inserted inside the bell to the point marked on the spigot end.
- c. HDPE Pipes: HDPE pipe requires extra care during the pipe laying stage to ensure a consistent and accurate slope. HDPE pipe is typically fused prior to laying. Fusing HDPE pipe shall be done in accordance with the manufacturer's recommendations.
- d. Reinforced Concrete Pipe: Rubber gaskets for reinforced concrete pipe shall be lubricated with an approved lubricant and carefully positioned in the gasket groove on the spigot. After the pipe is shoved home, the position of the rubber gasket shall be verified with a special feeler gauge. If the pipe is elliptically reinforced, special care shall be taken to insure the pipe is installed with the marked vertical axis in a vertical position.

#### C4.04 CONNECTIONS TO EXISTING MANHOLES

Pipe connections to existing manholes shall be made in such manner that the finished work shall conform as nearly as practicable to the applicable requirements specified for new manholes, including all necessary concrete work, cutting and shaping. Pipe penetrations shall match existing flowlines in the manhole base.

#### C4.05 CONNECTIONS TO EXISTING PIPES

Fittings or adapters required to connect new pipe to existing pipe shall be provided by the Contractor. Detail drawings of such fittings or adapters and the method of connection shall be submitted to the District Engineer for approval. New pipe shall be the same pipe type as existing pipe for main sewer extensions.

#### C4.06 SIDE SEWER CONNECTIONS TO MAIN SEWERS

##### 1. Concurrent Construction

Where side sewers are constructed concurrently with main sewers, connections shall be made with regularly manufactured wye or tee branches. The ends of the side sewer shall be securely stopped with plugs or caps, which can easily be removed without damage to the pipe end. The end of the side sewer shall be marked with a 2x4-redwood stake extending from the sewer invert to finished grade. In the case of new subdivision work, curbs shall be imprinted with a "s" directly over the side sewers.

##### 2. Side Sewer Connections to Existing Main Sewer

Side sewer connections to existing main sewers shall be made at existing wye or tee branches. Where, in the opinion of the District Engineer it is impractical to connect to an existing wye or tee branch, the connection shall be made as shown on the standard Details and as described below.

- a. Vitrified Clay Pipe Main Sewer: Connections to an existing vitrified clay main sewer shall be made by one of the following alternative methods.
  - i. Cut out a section of the main sewer and install a plain-end wye branch using banded rubber seal sleeves with stainless steel bands. This method shall be used whenever the side sewer is the same size **as** the main sewer. Concrete encase the banded rubber sleeves.
  - ii. Core a neat trim opening in the upper portion of the main sewer and install a special drilled fitting (i.e., "tap tight" or "inserta-tee") to complete the side sewer connection. Type of fitting to be approved by the District Engineer.
- b. PVC MAIN SEWER: Connections to existing PVC main sewers shall be made by one of the following alternative methods.
  - i. Core a neat trim opening in the upper portion of the main sewer and install a special drilled fitting (i.e. "tap tight" or "inserta-tee") to complete the side sewer connection. Type of fitting to be approved by the District Engineer.
  - ii. Cut out a section of the main sewer and install a wye branch with plain-end stub-outs and use double bell unions to connect to the main. This method shall be used whenever the side sewer is the same size as the main sewer.
- c. HDPE MAIN SEWER: Connections to existing PVC main sewers shall be made by one of the following alternative methods.
  - i. Side-fuse a nipple to the main sewer and butt-fuse the lateral to the nipple.
  - ii. Use a double-banded saddle with wide straps around the main sewer. Silicon seal the saddle to the main sewer to prevent leaks.
  - iii. Cut out a section of the main sewer and fuse a prefabricated TEE. This method may be used whenever the side sewer is the same size as the main sewer.
- d. REINFORCED CONCRETE MAIN SEWER: Side sewer connections to reinforced concrete main sewers shall be made with a service saddle. Details of connection shall be as approved by the District Engineer.

#### C4.07 BORING AND JACKING

Where permitted by the District Engineer, highway or railroad crossing may be made by boring and jacking. All work shall comply with the railroad, CalTrans or other jurisdictional requirements.

The bored hole shall be not greater than 2 inches in diameter larger than the largest outside diameter of the pipe measured at the joints to be installed.

Sufficient jacking capacity shall be provided to insure a successful operation. All utilities in the area shall be located by potholing prior to starting work.

If the sewer is to be installed in a bored and jacked casing, it shall be subject to all material and jointing requirements hereinbefore specified. The sewer shall be installed true to line and grade on wood blocks secured to the invert of the sewer pipe or pipe skids, as approved by the District.

After installation of the sewer pipe, the area between the casing and sewer pipe shall be filled with sand or gout and the ends of the casing pipe shall be sealed with an approved casing seal.

#### C4.08 CONCRETE THRUST BLOCKS

Concrete thrust blocks shall be provided on all force main bends having a deflection angle of 11 degrees or more. Thrust blocks shall have a sufficient bearing area on undisturbed soil to withstand the maximum force to be exerted.

#### C4.09 ACCEPTANCE TESTS

All gravity sewers, including manholes, shall be tested for leakage and inspected for obstructions (Clean and TV inspection), pipe deformation (mandrel), and alignment problems (visually). All lateral sewers shall be tested for leakage and inspected for obstructions and alignment problems. All force mains shall be tested for leakage and inspected for obstructions, deformation, and alignment. These are minimum test requirements. The District Engineer reserves the right to require additional testing, if he deems it necessary. The Contractor shall provide all labor, tools, equipment, waste disposal, and utilities necessary to meet the acceptance test requirements.

Acceptance tests for the building sewer shall be meet the requirements of the City of Brisbane or the City of Daly City as appropriate, and the tests will be performed by City personnel.

##### 1. Obstructions

After backfilling and compacting, but before repaving, all main sewers shall be cleaned and TV inspected for obstructions. If the televised line appears to be deformed the Contractor shall test for specification conformance by the sewer ball method. Means shall be provided for intercepting all grit, rocks, and other flushed debris to keep debris from entering the existing sewerage system.

##### 2. Leakage

The program of testing shall fit the conditions as mutually determined by the District Engineer and the Contractor. The Contractor shall take all necessary precautions to prevent any joint from opening while the pipeline and its appurtenances are being tested. The Contractor shall, at his own expense, correct any excess leakage resulting from or caused by this test. Where the actual leakage exceeds the allowable, the Contractor shall discover the cause and remedy it before the test is accepted. If the leakage is less than the allowable and leaks are observed, such leaks shall be repaired at the District Engineer's direction.

- a. Main Sewers: After main sewers have been inspected and cleared of obstructions and following backfill, but prior to repaving, they shall be tested

for leakage. Each section of the sewer shall be tested between successive manholes by closing the lower end of the sewer to be tested and the inlet sewer of the upper manhole with stoppers. At the Contractor's option either the hydrostatic or air test may be used.

Hydrostatic Test Fill the pipe and manhole with water to a point four feet below the ground surface of the upper manhole, but in no case less than four feet above the pipe invert. If ground water is present, the water surface in the upper manhole shall be at least four feet above the level of the ground water. The line shall be filled at least one hour prior to testing and shall be tested at least 2 hours by maintaining the head specified above with measured additions of water. The sum of these additions of water in the two-hour period shall be the leakage amount for the test period.

The maximum allowable head of water above any portion of sewer being tested shall be 15 feet. Where the difference in elevation between successive manholes exceeds 15 feet a test tee shall be installed between manholes, and testing shall be carried on between the tee and the manhole.

The allowable leakage shall not exceed 0.1 gallons per minute per inch diameter, per 1000 feet of main line sewer being tested.

Where media other than water is used for testing, the allowable leakage shall be as mutually agreed to be between the District Engineer and Contractor.

Air Test Air test shall be applied to each length between adjacent manholes, and the procedure shall be as follows:

Pressurize the test section to 3.5 p.s.i. and hold above 3.0 p.s.i. for not less than 5 minutes. Add air if necessary to keep the pressure above 3.0 p.s.i. At the end of this 5-minute saturation period, note the pressure (must be 3.0 p.s.i. min.) and begin the time period. If the pressure drops 0.5 p.s.i. in less than the time given in the following table, the section of pipe has not passed the test.

<u>SIZE</u>	<u>MINIMUM TIME IN SECONDS</u>
4"	125
6"	185
8"	245
10"	310
12"	370
15"	460
18"	555

<u>SIZE</u>	<u>TIME IN MINUTES</u>
21"	10
24"	12
27"	14
30"	16
36"	18
42"	20

48"  
54"

23  
26

If the time for the pressure to drop 0.5 p.s.i. is 125% or less of the time indicated, the line shall immediately be repressurized to 3.0 p.s.i.g. and the test repeated. If during the 5-minute saturation period, the pressure drops less than 0.5 p.s.i. after the initial pressurization and air is not added, the section undergoing the test shall have passed.

If the test is not passed, the leak shall be found and repaired to the satisfaction of the District Engineer, and the section shall be retested.

When the prevailing ground water is above the line being tested, air pressure shall be increased 0.43 p.s.i. for each foot the water table is above the invert of the line.

The pressure gauge used shall be supplied by the Contractor, shall have minimum divisions of 0.10 p.s.i., and shall have an accuracy of 0.04 p.s.i. Accuracy and calibration of the gauge shall be certified by a reliable testing firm when requested by the District Engineer, or at six (6) month intervals.

- a. Manhole Testing: After completion of manhole construction, all manholes shall be tested for leakage. The Contractor shall furnish all labor, tools, and equipment necessary to make the test and to perform any work incidental thereto.

The Contractor shall, at his own expense, correct any excess leakage and repair any damage to the pipe and its appurtenances or to any structures resulting from or caused by these test. Each manhole shall be tested using the water test or vacuum test method.

Water Test – Each manhole shall be tested by inserting inflatable plugs in all sewer inlets and outlets of the manhole, and filling the manholes with water to a point six inches below the base of the manhole frame.

The manhole shall be filled at least one hour in advance of the official test period to allow time for absorption. The loss of water may be determined by measuring additions of water required to maintain the specified water level, but the level shall not be allowed to fall more than 25% of the manhole depth.

The allowable leakage shall be determined by the following formula:

$$E_m = .0002 \times L \times \text{square root } H$$

where

$E_m$  = amount of allowable leakage in gallons per minute. (gpm)

$L$  = depth of manhole from top to bottom. (feet)

$H$  = head of water as measured from the sewer line invert or from prevailing ground water against outside of manhole barrel. The lesser height governs. (feet)

Vacuum Test – Each manhole shall be tested by inserting inflatable plugs in all sewer inlets and outlets of the manhole and using a vacuum test

apparatus. The vacuum test apparatus shall be sized to seal no more than the top 6" of the manhole measured from finished grade and capable of pumping out a manhole to -10 in Hg.

Pump out the manhole to -10 in Hg. If the vacuum does not drop in excess of 1 in Hg over the specified time in the table below, the manhole passed the test.

Manhole Depth-Feet	DIAMETER INCHES		
	48	60	72
4	10 sec.	13 sec.	16 sec.
8	20 sec.	26 sec.	32 sec.
12	30 sec.	39 sec.	48 sec.
16	40 sec.	52 sec.	64 sec.
20	50 sec.	65 sec.	80 sec.
24	(A) 60sec.	(B) 78sec.	(C) 96 sec.
* Deeper than 24 ft	(A') 05 sec.	(B')6.5sec	(C') 8.0 sec.
<p><b>*Test time=A,B or C respectively +(MHDepth-24)x1/2 x A',B' or C'.respectively.</b>            (The values listed above have been extrapolated from ASTM designation C924-85)</p>			

Where the actual leakage in a manhole exceeds the allowable, the Contractor shall discover the cause, remedy it, and retest the manhole before the manhole is accepted. If the leakage is less than allowable and leaks are observed, such leaks shall be repaired.

As an alternative to the above procedures, the Contractor may fill the manhole with water prior to backfill and repair all visible leaks provided there is no ground water above the manhole base. Any visible leaks into or out of a manhole shall be repaired. Alternative methods of manhole testing will be considered by the District Engineer.

Where media other than water is used for testing, the allowable leakage shall be as mutually agreed to by the District Engineer and Contractor.

- b. Lateral Sewers: Lateral sewers shall be tested after being connected to the main sewer following the same procedure as used for the mainline. The lateral will be plugged at the cleanout when performing the test.
  - 1. For new construction, lateral sewers shall be TV inspected twice. The first inspection shall occur after initial construction is complete and before the new building construction and landscaping is complete. The second inspection shall be performed prior to occupancy and after the new building construction is complete.

- c. Force Mains: Force mains shall be tested for leakage in conformance with applicable portions of Section 13, American Water works Association C600, for test pressure of 150 percent of the specified working pressure for the pipe. The test shall last at least one hour at the required pressure measured at the test pump. The allowable leakage shall be computed by the following formula:

$$L = \frac{NDP^{1/2}}{1850}$$

where

L = allowable leakage, gallons per hour

N = number of joints in test section

D = nominal pipe diameter, inches

P = average test pressure, pounds per square inch.

## SECTION C4B – TRENCHLESS REPLACEMENT

### C4B.01 SCOPE

The work shall consist of furnishing all labor, materials, equipment, and supervision to perform all work necessary to replace certain sanitary sewer lines utilizing trench replacement. The trenchless replacement work shall consist of, but not necessarily be limited to, performing the following tasks where specified:

1. Bypassing sewage flow during the trenchless replacement operations,
2. Locating and disconnecting of all existing laterals,
3. Replacing existing main by pipebursting,
4. Re-connecting existing laterals,
5. Cleaning, testing, and inspecting installed pipe

### C4B.02 SUBMITTALS

Required submittals include the following:

1. Shop drawings; catalog data, and manufacturer's technical data showing complete information on material composition, physical properties, and dimensions of new pipe and fittings.
2. Manufacturer's recommendation for handling, storage, repair, and installation of pipe.
3. Sewage bypassing plan.
4. Certification of workmen training for installing pipe.
5. Certification of workmen training for joining pipe.
6. Field testing results including television inspection reports and videotapes made after new pipe installation.

### C4B.03 PIPE MATERIALS

#### 1. Polyethylene Pipe (HDPE)

HDPE pipe and fittings shall be SDR 17 consisting of virgin high-density polyethylene, specified under ASTM D3350 as having a cell classification of PE345434C. Pipe shall have a Manning "n" factor of 0.009 for gravity flow.

The interior of the pipe will have a light reflective color to allow viewing by television inspection.

The pipe shall be homogeneous throughout and shall be free of visible cracks, holes, foreign material, blisters, or other deleterious faults. Any material may be rejected for failure to meet any of the requirements of this specification. Any section of the pipe with the following shall not be used and must be removed from site:

1. Surface defects including a gash, blister, abrasion, nick, or scar.
2. Deleterious fault greater in depth than 10% of the wall thickness.
3. Concentrated ridges.
4. Discoloration.
5. Excessive rough spot.
6. Pitting.
7. Variable wall thickness.
8. Any other defect of manufacturing or handling as determined by the District.

However, a defected area of pipe may be cut out and the joint fused by the procedures per Paragraph C4.09. The acceptance of any deviation from these specifications shall be subject to the approval of the District.

#### C4B.04 TRENCHLESS METHOD AND EQUIPMENT

The Contractor shall be licensed by and pay all royalties to the holder of the patent, if any, for the trenchless replacement system used by the Contractor. The Contractor shall hold the District harmless in any legal action resulting from patent infringements.

The method approved for replacement of existing sanitary sewers by trenchless method and installation of new polyethylene pipe is pneumatic bursting, static bursting (mole), imploding or equal.

The main components of a pipebursting system consists of a pipe bursting tool or head, to which the new pipeline is connected, and a pulling machine or pulling winch. The bursting head is inserted into the sewer section to be replaced, and is pulled by a pulling machine or pulling winch located in a pulling pit, located at a certain distance along the alignment of the sewer section under consideration, away from the device insertion location. The bursting head shall pull behind it the new sewer pipe to be placed along the same horizontal and vertical alignments of the existing sewer. The backside of the bursting head shall be firmly connected to the new sewer pipe to be pulled in place of the existing sewer.

For gravity-type wastewater pipeline applications (12" in diameter or smaller) where reception excavations are either impractical or undesirable, the winching system shall be installed within a standard manhole so as to receive the bursting head and the new replacement pipe.

Upon commencement, pipe insertion shall be continuous and without interruption from one manhole to another, except as approved by the District.

##### 1. Bursting Head

The pipebursting tool shall be designed and manufactured to force its way through existing pipe materials by fragmenting the pipe and compressing the old pipe sections into the surrounding soil as it progresses. The bursting unit shall provide smooth, controlled power to burst and compact the existing pipeline. Vibrations from the bursting equipment shall not damage the surrounding utilities and structures. See manufacturer's specifications for what size tool should be used in what diameter of pipe, as well as parameters of what size tool for percentage of upsize allowed.

- a. The design and shape of the head shall be such that the existing pipe will be broken into many small fragments.
- b. The method of connection of the replacement pipe to the unit shall be such that stresses transmitted to the replacement pipe are not damaging to the pipe and will not exceed the tensile capacity of the pipe.
- c. Provisions shall be made in the equipment to remotely start and stop the unit should it become necessary to temporarily cease operations.
- d. Measures shall be taken to ensure that the pipe does not become separated from the bursting head.

- e. The bursting head shall incorporate a shield/expander to prevent collapse of the hole ahead of the PE pipe insertion.

## 2. Winch or Pulling Unit

The winch shall be attached to the front of the bursting unit. The winch or pulling unit shall be operated to provide constant pull to the bursting unit in order that it may operate in an efficient manner with a minimum of recoil. It shall ensure directional stability in keeping the unit in line.

- a. The winch shall be of the constant tension, variable speed type and shall be fitted with a direct reading load gauge to measure the winching load.
- b.
- c. For static bursting, the winch shall be fitted with a device to automatically disengage when loading exceeds a preset maximum load, or the bursting head shall be connected to a pipe known as the "weak link" which will break before the maximum load on the replacement pipe is reached.
- d.
- e. Contractor shall supply sufficient cable in one continuous length so that the pull may be continuous between winching points.
- f.
- g. The winch, cable and cable drum shall be provided with safety cage and supports.
- h.
- i. The Contractor shall also provide a system of guide pulleys and bracing at each manhole to minimize contact of cable with the existing sewer between manholes.
- j.
- k. Supports to the trench shoring in the insertion trench shall remain completely separate from the pipe support system and shall be so designed that neither the pipe nor the winch cable shall be in contact with them at any time.
- l.
- m. Proper clearance shall be provided below the existing pipe to allow for the proper use of winch.

## C4B.05 TREATMENT OF PIPE

### 1. At Intermediate Manholes

When the pipe passes through an intermediate manhole, it shall be cut in an approved manner so that 2" protrudes into the manhole or a channel shall be formed by cutting out the top of the pipe using a small compressed air disc cutter.

At existing manholes, existing pipe shall be chipped out of the manhole prior inserting the new sewer pipe to protect the manhole from the stresses caused by the trenchless replacement method. The invert of the manhole shall be broken out to a depth of 1½" and rebenched using concrete. The rehabilitation of the base of the manhole shall then be completed by rebenching to the PE channel using concrete.

### 2. At Upstream and Downstream Manholes

At the upstream and downstream ends the pipe shall be cut in an approved manner so that 2" protrudes into the manhole. The invert of the manhole shall be suitably prepared such that

a smooth transition shall be made from the existing pipework to the new pipe. The existing pipe shall be chipped out of the manhole prior inserting the new sewer pipe to protect the manhole from the stresses caused by the trenchless replacement method, as necessary.

3. Relaxation Period

The contractor shall allow the pipe to "relax" for the manufacturer's recommended amount of time, but not less than four (4) hours or pneumatic bursting or twelve (12) hours for static bursting, after trenchless replacement has been completed. A minimum of 2 feet of pipe shall remain in the manhole during the relaxation period.

4. Sealing Pipe in Manhole

Following the relaxation period, to seal the PE pipe in the manholes at the entry and exit points, the ends of the pipe shall be surrounded in non-shrink grout, which forms part of the manhole base after water stops are installed per detail.

C4B.06 INSERTION AND PULLING PITS

The size, location and method of excavation and shoring of all pits on site shall be determined prior to the start of the project. In considering locations for access pits, the Contractor shall consider the size of the sewer, locations of obstructions and services, pulling distances, traffic conditions, and locations of utilities and sewer laterals. When possible, intermediate access excavations can coincide with building service connection excavations or critical obstructions in the sewer. The locations of the excavation points should be such as to minimize traffic disruption.

The insertion pit should be large enough to allow the new pipe to enter the existing pipeline alignment on-grade. The pipeline should not enter the existing pipeline alignment at an angle.

The end of the launch pit on which the pusher forces are exerted shall be supported using beams or plates of sufficient surface area to allow these forces to be dissipated into the surrounding soil.

C4B.07 PIPE INSERTION

1. The installation forces on the pipe shall be kept to a minimum. Maximum force to be within stress limits of the pipe.
2. Rollers shall be provided at the insertion pit so that no pipe drags along the ground surface.
3. A roller or rub shoe shall be installed at pipe entry to prevent pipe chatter as the pipe enters the existing line.
4. Where a device is employed to exert force on the rear of the inserted pipe lengths, the force applied to the inserted pipe shall be evenly distributed around the wall of the pipe.
5. Where lengths of pipe are jointed and a device is employed to exert force to the rear of the inserted pipe lengths, precautions shall be taken by the Contractor to ensure that no buckling, crushing or twisting of the pipe occurs.

6. Lubrication may be used as recommended by the manufacturer.

#### C4B.08 MAINTAINING SEWER SERVICE

The Contractor shall be responsible for maintaining all flows within the system. He shall bypass the flows around those sections of pipe to be replaced. The Contractor shall comply with the bypassing guidelines listed in Paragraph C1.19 "Bypassing During Construction."

#### C4B.09 PIPE JOINING

Pipe shall be butt welded in accordance with ASTM D2657. The joints shall be leakproof, thermal, butt joints. Threaded or solvent-cement joints and connections are not permitted.

All fusing shall be done using tools recommended by the pipe supplier and approved by the District. Operators shall be certified by the pipe manufacturer and/or fusing equipment.

The butt-fused joint shall be true alignment and shall have uniform rollback beads resulting from the use of proper temperature and pressure. The joint shall be allowed adequate cooling time before removal of pressure. The fused joint shall be watertight and shall have tensile strength equal to that of the pipe. Joints shall be smooth on the inside and internal projection beads shall not be greater than 3/16-inch.

All joints shall be subject to acceptance by the District prior to insertion. All defective joints shall be cut out and replace at no cost to the District. A specimen of pipe cut across the butt fusion joints shall be tested in accordance with ASTM D638.

A copy of the required butt fusion parameters listed below shall be kept at the job site so that the temperatures and pressures of the jointing process are known and can be checked on site.

- a. The temperature at the surface of the heating plate (the fusion temperature);
- b. The pressure used to push the pipe against the heating plate;
- c. The time when the pipe ends are in contact with the heating plate but no pressure is being applied (soak time);
- d. The pressure used to push the pipe ends together after heating (the fusion pressure);
- e. The time of application of this butt fusion pressure (fusion cooling time);
- f. Allowable bead height and width range.

#### C4B.10 LATERALS

All lateral connections will be located by the Contractor, disconnected prior to bursting, and then permanently reconnected to the new pipe after bursting has been completed. The Contractor shall expedite the reconnection of services so as to minimize any inconvenience to the customers.

Reconnection of laterals shall be accomplished from the ground surface by excavating a small opening and utilizing appropriate shoring so the connections can be made safely. The finished connection shall be made flush with the new sewer and shall provide a smooth transition to the existing lateral pipework.

Contractor shall reconnect service laterals by using a fusion sidewall saddle. The following steps must be followed:

- a. Rough up area on pipe and end of fitting to be fused with sandpaper and wipe off with clean rag.
- b. Preheat iron to 500 degrees and place on pipe. Hold on pipe until melt pattern is achieved. Place fitting on iron and hold for 90 seconds. After 90 seconds, pop fitting off iron and then remove iron from pipe.
- c. Place fitting on melt area and hold for 3 minutes. Fitting can be drilled after it is cool to the touch. (All pressures are just hand pressures.)
- d. Drill out service connection.
- e. Deburr

Three (3) feet of the existing lateral or the length of lateral showing within the excavation trench, whichever is greater shall be replaced when the lateral is reconnected. The new portion of the lateral shall be constructed of the same type of material as the new mainline. One non-shear type coupling with stainless steel bands may be used to connect the new lateral connection to the existing vitrified clay pipe lateral. The root treatment system specified in Section 3.09 shall be applied to both joints of a coupling attached to an existing lateral. Couplings are NOT allowed on the mainline.

#### C4B.11 EXCAVATION AND BACKFILL

Insertion trenches shall be prepared and backfilled in accordance with sound bedding practices and with ASTM D2774 and D2321.

At all points where the new sewer pipe has been exposed, such as access shafts, service connections, outside of manholes, etc., the Contractor shall use the bedding and backfill materials and compaction requirements as specified for trench sections in this contract.

Where an unstable or running soil condition occurs, such as in excavations below ground water, bedding material shall be used according to the trench section detail specified herein. It may be necessary to increase the trench width to obtain the desired lateral support for the pipe.

#### C4B.12 CLEANING, TESTING, AND INSPECTING

Pipelines shall be cleaned, inspected and tested per Section C5.

#### C4B.13 RESTORATION

After completion of backfill, all material not used therein shall be removed and disposed of by the Contractor in such a manner and at such point or points he may select, subject to the approval of the District. All roads, sidewalks, and other places on line of work shall be left free, clean and in good order. All removal and cleaning up shall be done by the Contractor without extra compensation, and, if he fails to do such work within a reasonable time, after receipt of notice, the work will be performed by the District, and the cost deducted out of monies due or to become due the Contractor.

All restoration shall be included in the Contractor's unit and/or lump sum prices bid. Damage to property outside of specified construction limits shall be the responsibility of the Contractor and restoration of it shall be made at the Contractor's expense.

## SECTION C5 – RESURFACING

### C5.01 SCOPE

Resurfacing includes the furnishing and installation of all materials, equipment, and labor necessary for the replacement and restoration of all streets, roads, highways, sidewalks curbs, gutters, driveways, and similar surfaces.

### C5.02 GENERAL

Any concrete or bituminous paved surface which is broken, removed, or damaged by the Contractor's operations shall be restored at least to the condition existing prior to beginning work. Notwithstanding the provisions of this section, all work will be subject to the requirements of the entity having jurisdiction over the affected area. The Contractor shall familiarize himself with the requirements of said entity and shall comply in all respects with these requirements. Wherever there is conflict between the requirements of the entity having jurisdiction and the requirements of this section C7, the more restrictive of the two shall be the requirement with which the Contractor shall comply.

### C5.03 MATERIALS

1. Concrete

Concrete shall be as hereinbefore specified in Section C3.

2. Aggregate Base Course

Aggregate base course shall conform to the requirements of CalTrans Standard Specifications, Section 26 and shall be ¾ inch Class 2 AB maximum size.

3. Prime Coat

Prime coat shall conform to the requirements of CalTrans Specifications, Section 39. Liquid asphalt grade for prime coat shall be as specified in the Special Conditions.

4. Asphalt Concrete Surfacing

Asphalt concrete surfacing shall conform to the requirements of CalTrans Specifications, Section 39, and shall be Type B, ½-inch maximum size. Paving asphalt shall conform to the provisions in Section 92 and shall be of the penetration range specified in the Special Conditions.

### C5.04 PREPARATION OF SUBGRADE

After backfill has been properly placed in the trench and other affected areas. In accordance with the provisions of Section C2.04 of these standard specifications, the surface shall be rolled or tamped until the subbase is firm and unyielding. Mud or other soft or spongy material shall be removed and the space filled with gravel and rolled or tamped

in layers not exceeding 4 inches in thickness. The edges of all existing surfaces shall be saw cut and square prior to placement of the base course and final surface.

#### **C5.05 CONCRETE SURFACES**

Reconstruction of concrete curbs, gutters, driveways, and sidewalks shall be of the same kind of material and not less than the same dimensions as the overall work. In the case of concrete slabs, the minimum thickness shall be 4 inches. Repairs shall be made by removing and replacing the entire portions between joints or scores and not merely by refinishing the damaged part. All work shall match the appearance of the existing improvements as nearly as practicable.

#### **C5.06 ASPHALTIC SURFACES**

After the base course has been compacted, plant-mix surfacing shall be applied to a minimum depth of 2 inches, but in no case less than the thickness of the existing pavement. Before placing the plant-mix surfacing, a prime coat of asphaltic emulsion shall be applied over the area to be resurfaced. Proportioning, mixing, spreading, and compaction of asphalt concrete shall conform to applicable portions of CalTrans Standard Specification, Section 39, except that a self-propelled mechanical spreading and finishing machine need not be used.

#### **C5.07 SURFACE TREATMENTS**

If special surface treatment such as seal coat, armor coats, or fog seal are required by the jurisdiction authority, they shall be done to the requirements of the authority.

#### **C5.08 RESTORATION OF SURFACE MARKERS**

Traffic markers or other surface markings painted on the roadway surface, which have been damaged or destroyed shall be replaced in strict accordance with the requirements of the jurisdictional authority. Traffic loops when damaged by the construction shall be replaced as soon as possible after damaging. The Contractor must notify the District appropriate City Public Works, Police and Fire Departments immediately after damage occurs. The Contractor shall replace the damaged loops in strict accordance with the requirement of the jurisdictional authority.

## SECTION C6 – SEWER LINE CLEANING

### C6.01 INTENT

The Contractor should understand the purpose and intent of any sewer line cleaning specified in the contract in relation to the degree of cleaning and inspection required. Attention by the Contractor is directed to Article C1.09, Safety and Health Provisions, of these Specifications with respect to CAL OSHA rules and regulations to follow before entering manholes.

Examples of cleaning purposes and associated cleaning requirements follow:

1. **Removal of Blockages:** This is usually emergency cleaning. The requirement is to remove or relieve a particular blockage and prevent sewage back up, overflow, and property damage.
2. **Routine Maintenance:** This often involves moderate root removal or the removal of light to heavy debris preventing adequate flow. The intent is to prevent blockages and restore the sewer to near-full capacity and self-scouring velocity. Cleaning requirements are not usually stringent if the purpose appears to have been achieved.
3. **Cleaning Prior to TV Inspection:** Cleaning in preparation for TV inspection must be performed more thoroughly than for routine maintenance. Pipe walls must be clean enough for the camera to discern structural defects, misalignment and points of infiltration. Small amounts of debris left on the sewer invert, such as sand, stone or sewage solids, may not interfere with effective inspection.
4. **Cleaning in Preparation for Sewer Pipe Joint Sealing or Pipe Lining:** cleaning must be much more thorough than for sewer maintenance. All sand, rocks, gravel, grease, mud, sludge and other debris must be removed from the sewer invert to permit operation of a sealing packer. Roots usually enter the top portion of the pipe and should be removed to the extent necessary to effectively seal the joints.

It is usually desirable to perform the cleaning immediately prior to joint sealing or pipe lining operations to preclude the buildup of materials from infiltration and inflow sources and the shoaling of wastewater debris.

### C6.02 MATERIALS TO BE REMOVED

The bulk of sewer cleaning is involved with the removal of sludge, mud, sand, gravel, rocks, bricks, grease, and roots from pipes, manholes, and wet well. Other material may be found in combined sewers. Removal of bricks, pieces of tile and clean sand or soil indicates structural problems such as broken or collapsed pipe.

### C6.03 SEWER CLEANING PROCEDURES

Sewers are generally cleaned in a downstream direction starting at the upstream manhole section of the area to be cleaned. Selection of equipment and methods often depends on the conditions at the time the work commences. The equipment shall be capable of removing dirt, grease, rocks, sand, and other materials and obstructions from the sewer line manholes. If cleaning of an entire section cannot be successfully performed from one

manhole, the equipment may be set up on the downstream manhole and cleaning again attempted. If, again, successful cleaning cannot be performed or the equipment fails to traverse the entire manhole section, it may be assumed that a major blockage exists and the cleaning effort should be terminated. The Contractor shall make a note of the indicated location (footage) of the blockage in anticipation of excavation, which may be required. The Contractor shall make note of the sewage flow and determine if the blockage is causing a sewage back-up which requires near-term or emergency action by the District. The Contractor shall immediately report the need for appropriate action to the District.

#### C6.04 PIPE DAMAGE PREVENTING CLEANING OPERATIONS

The Contractor should recognize that there are some conditions such as broken pipe and major blockages that prevent cleaning from being accomplished or where damage would result if cleaning were attempted or continued. Should such conditions be encountered, the Contractor shall not attempt to clean the damaged section(s) of pipe, but instead notify the District of the problem. The Contractor should be knowledgeable of and alert for any conditions which warrant termination of cleaning activities.

Example: The removal of large quantities of fresh soil with a jet cleaner may indicate broken or collapsed pipe.

Example: The removal of bricks from a brick sewer with a bucket machine may indicate more harm is being done than good.

#### C6.05 DEBRIS REMOVAL

Sludge, dirt, sand, rocks, grease, and other solid or semisolid material resulting from the cleaning operation shall be removed at the downstream manhole of the section being cleaned. Passing material from manhole section to manhole section is not permitted.

#### C6.06 CLEANING TASKS

The Primary tasks performed in sewer cleaning are:

1. Dislodge materials.
2. Transport materials to a point of access.
3. Remove materials from the sewer system.
4. Transport materials to a disposal site.

Most cleaning techniques require access for men and equipment at the downstream manhole where materials are to be removed. Some cleaning techniques require equipment access at both ends of a sewer section. If unable to obtain access to a manhole necessary for the cleaning operation, the Contractor shall immediately notify the District of the manhole and reason why access is restricted.

#### C6.07 CLEANING METHODS

The Contractor shall be experienced with the methods and techniques used with each type of sewer cleaning equipment that he intends to use. A general discussion of the different cleaning methods follows:

## 1. Rodding Machine

Rotating-rod sewer cleaning equipment is practical and useful for returning clogged sewers to service. The rods are generally 3/8 to 1/2-inch in diameter and may be sectional or continuous. Rods are made of high-strength, oil-tempered spring steel.

A sewer rodding machine can push the rod through a sewer for a distance as great as 800 feet. It can also be used in curved sections.

The rodding machine should be set up in close proximity to the downstream manhole and positioned so that the flexible rod guide (containing the rotating rod) makes a gentle curve from the machine to the entrance of the sewer pipe at the bottom of the manhole. The rod is usually pushed upstream so that the flow will help bring the debris back toward the machine.

The rod can be fitted with a variety of tools. To open a line that is completely plugged, the operator can place a small spear or a corkscrew device on the end of the rod. The rodding machine will push and rotate the rod into the blockage to make an opening large enough to permit wastewater to start flowing.

The operator can then replace the corkscrew with an auger. Augers are spiral-shaped cutting devices with diameters smaller than that of the pipe to be cleaned. The rodding machine rotates the rod and the auger, forcing the auger upstream into the sewer to grab as much of the clogging material as it can, and then retrieves the rod, pulling the debris back downstream.

The operator should set the footage meter on the machine to zero before pushing the rod up the sewer. This zero setting indicates how far the cleaning tool is into the line.

The operator can move the rod forward without rotating it, but it should be rotated in larger pipes or if debris is encountered to prevent buckling the rod. If the line is fairly clean, the rotating rod can be moved quickly and easily. When cleaning becomes difficult, increasing hydraulic system pressure and the sound and speed of the machine alert the operator. Cleaning can continue if the hydraulic pressure is within limits, but the forward speed should be reduced and the rod rotation speed maintained. The machine must have a pressure (or mechanical) overload device to prevent the rod from being twisted off if the tools should stop rotating in the sewer.

If the rod and the cutter appear to be making no forward progress and high hydraulic system pressure is indicated, the cutter probably has encountered a heavy mass of roots or other obstruction. The operator should reverse the rotation, retrieve the rod and cutter, clean the cutter of entangling roots, and then run the rod and cutter back to again attack the obstruction.

The rod can be pulled back without rotating, but in general it should not be. Spring-blade cutters can be attached at the upstream manhole and pulled back with the cutter rotating at maximum speed.

Many cleaning tools can be used by rodding machines. Among them are:

- Root saws.
- Expandable cutters with two or three knife blades that can adjust to the diameter of sewer being cleaned.
- Sand cups are rubber discs designed to permit passage of a portion of the wastewater flow through holes in the disc, thereby creating jets which flush the debris toward the downstream manhole.

## 2. Bucket Machine

Bucket machines are strong, powerful pieces of equipment. They can open heavily blocked sewers clogged with large masses of roots, sand, or clay. When a crew completes its cleaning using this type of machine, the sewer should be in good flowing condition, unless it contains broken pipe.

The crew must first thread the cable through the length of sewer to be cleaned. One method is to float or flush a light rope through the pipe, assuming that the flow is sufficient and there are no blockages or root curtains. A more positive method is to pull the cable through using a rodding machine or jet cleaner.

A bucket machine setup consists of two powered winches, each equipped with sufficient steel cable to reach between two manholes, generally not over 750 feet. The cleaning crew will center the machines over the two manholes.

A specially designed bucket serves as the connecting link between the two cables permitting the machines to pull the bucket in either direction. The bucket is designed so that one end opens and closes. One of the machines pulls the bucket into the sewer with the bucket end open. When the bucket is full, the other machine pulls it back. When the bucket is pulled back, the "clam shell" end automatically closes.

Most models can draw the bucket completely out of the manhole and, by use of a swinging boom or chute, discharge the debris into a dump truck.

After the operators have removed the bulk of the debris from the sewer line, they can replace the bucket with a "porcupine". This is a cleaning tool with stiff wire cables protruding outward. By drawing it back and forth in the sewer, the operator can remove roots and grease deposits. For a final, wiped-clean finish, the operator can replace the porcupine with a rubber "squeegee".

## 3. High-Velocity Jet Machine

High-velocity jet sewer cleaning using water pressure can produce excellent results. Under favorable conditions, jet cleaning has demonstrated the ability to clean a line faster and with greater efficiency than any of the other methods.

There are many advantages. Operation is at street level without requiring the crew to enter the manhole. Little time is required for setup. An operator can quickly and thoroughly clean a small diameter sewer 500 feet long.

Although the method uses water at high pressure, tests have shown that the water jets do not harm pipe joints. A jet cleaner can clean curved lines where buckets and rotary cutters would harm the pipe.

The cleaning unit carries a supply of water, generally 1000 to 2000 gallons. The pump usually has a capacity of 50 to 100 gpm delivering water at a pressure of 1000 to 2000 psi. The cleaner usually is supplied with 500 to 600 feet of high-pressure hose.

The nozzle provides the cleaning action. The nozzle has a backward spray that propels the hose up the sewer to be cleaned. When the operator retrieves the hose, the water jets scour the sewer and move the debris to the downstream manhole.

#### 4. Hydraulically Propelled Equipment

##### a. Cleaning Ball:

Over the years, the use of a rubberized ball to clean flowing sewers has proved its effectiveness. An experienced operator will hold back the ball to permit wastewater to pass around its lower perimeter, thus flushing the debris ahead to the downstream manhole.

To use sewer balls, a crew should be equipped with:

- At least 600 feet of 0.5-inch synthetic-fiber rope mounted on a winch. For balls over 15 inches in diameter, steel cable is preferred.
- A swivel and clevis that serves to attach the rope or cable to the ball.
- 400 feet of fire hose and a gate valve fitted with connections to attach to a hydrant.
- A downhole roller having a free-running wheel to be fitted into the upstream manhole for the rope or cable.
- Rubber buckets, appropriate shovels, boots, and safety harnesses for use when crewmembers enter the manhole.

The downhole roller is placed in the upstream manhole and set firmly in place. The wheel should be above and opposite the outgoing sewer opening which serves as the entry point for the ball. This wheel location permits the cleaning crew to insert the ball into the downstream pipe.

An elbow trap is placed in the outgoing pipe of the downstream manhole to confine debris flushed out by the ball and permit passage of wastewater downstream. The rope or cable is passed under the roller and secured to the ball. The ball is then inserted into the outgoing pipe. Finally, hydrant water is introduced at an upstream manhole to raise the level in the upstream manhole to a depth of approximately 3 feet.

A few tugs on the rope, permitting some water to escape around the perimeter of the ball, will start the ball moving. Most of the water will **escape** around the lower surface of the ball since the ball's buoyancy will hold it against the top of the pipe. The static head will then force the ball to move downstream. The operator must keep the rope or cable tight to prevent it from overriding the ball if the ball is not inflated to a snug fit.

The ribbed ball flutters, rather than spins, in the pipe. It will develop about 6 inches of turbulent water on the downstream side, and this water will lift the debris and flush it toward the downstream manhole, where it can be shoveled out or removed by debris removal equipment.

If the ball stops moving, it is pulled back, increasing the flow around the ball, which levels the debris and allows the ball to proceed.

In general, the ball is inflated with enough air to make it fit snugly in the pipe, although some conditions can require the ball to be underinflated. The operators must learn through experience how much inflation is required.

The cross-sectional area of a cleaning ball increases with the square of its diameter. Thus, a 30-inch ball has four times the area of a 15-inch ball. With the same head of water behind it, the 30-inch ball will have four times the propulsive force of a 15-inch ball and nine times the force of a 10-inch ball. Large cleaning balls are hard to control and difficult to handle.

b. **Hinged-Disc Cleaner:**

The hinged-disc cleaner operates in a manner similar to that of the ball. The device is inserted into the outgoing sewer line. Flow is reduced and the resulting head causes the machine to roll down the pipe until debris is encountered. The scooter will then stop, causing the water to rise upstream. A cable attached to the device is then pulled back, causing the upper half of the disc to rotate backward and release the accumulated head. The velocity of the released water is generally several times the normal velocity of the sewage and washes the debris downstream, where it is removed at the next manhole.

When heavy debris is encountered, the device is pulled back, causing the flushing action, and then released. This operation results in a completely clean pipe.

The hydraulic force available increases with the square of the pipe diameter, while the amount of debris increases in proportion to the diameter. As a consequence, the scooter's ability and efficiency increase in larger pipe, but a large amount of water is required.

5. **Plain Flushing**

Plain flushing is a simple technique that can be justified only in flat areas where solids tend to settle out and become septic. Flushing requires only a hose connected to an upstream hydrant. The technique gives no assurance of good cleaning between manholes.

**C6.08 CLEANING EQUIPMENT**

There are five types of cleaning equipment:

- a. Rodding machines
- b. Bucket machines

- c. High-velocity jet machines
- d. Hydraulically propelled equipment
- e. Debris removal equipment (including combination machines)

Cleaning equipment is available with characteristics ranging from light to heavy duty. Each type of equipment can utilize special attachments, tools, and methods to expand its capabilities. Cleaning equipment will be evaluated here with emphasis on its primary application.

The Contractor should not be concerned with the type of equipment used (unless specified in the contract) provided that the specified results are obtained ... unless the Contractor's equipment is likely to cause pipe damage, flooding of private property, etc.

The applications, advantages and limitations of each type of sewer cleaning equipment are summarized on the following pages.

## 1. Rodding Machines

### a. Materials removed:

- Most effective for dislodging roots and relieving blockages.
- Applicable for dislodging and transporting sludge, mud, and grease using appropriate accessory tools and adequate flushing water.

### b. Pipe size range:

- Generally 6-inch to 18-inch pipes due to the limited pulling power and the tendency of the rod to bend in larger pipes.

### c. Technique advantages:

- Access to the downstream manhole only is required.
- Can be used at the upstream manhole under surcharge conditions.
- Threading the sewer line is not necessary; often used for threading sewer lines for other cleaning or inspection equipment.
- Fast response to emergency stoppages.

### d. Technique limitations:

- Generally ineffective for cleaning heavy solids.
- A large quantity of water is required for "brush and flush" cleaning.
- Does not provide for removal of materials from the manhole.
- Rod and/or tool can be broken off in the sewer line. Operation is moderately hazardous.

## 2. Bucket Machines

### a. Materials removed:

- Most effective for dislodging, transporting and removing heavy solids such as gravel, rocks, bricks, and roots.
- Applicable for dislodging and transporting mud, sand, and grease.

b. Pipe size range:

- Generally 18-inch to 36-inch pipes make the best use of the available power although 12-inch to 15-inch pipes can be cleaned.

c. Technique advantages:

- Provides the "iron and power" for removal of large amounts of heavy solids and roots.
- Effective in large-diameter pipe.
- Various buckets, scrapers, brushes, and squeegees are available.
- Can remove materials from the manhole.

d. Technique limitations:

- Access to both manholes is required.
- Threading the sewer line is necessary.
- Time consumed is longer than for other methods for light cleaning.
- Uses heavy tools and has the power to damage the pipe.
- Curved pipe, structurally damaged pipe, off set joints, and intruding service connections can preclude the use of bucket machine tools.
- Bucket machines are hazardous to transport, set up and operate.

3. High Velocity Jet Machines (capabilities depend on size of machine)

a. Materials removed:

- Most effective for cleaning pipes of light solids such as sludge, mud, sand, and gravel.
- Applicable for dislodging and transporting rocks and grease.
- Capable of cutting light root growth by using special tools in pipes generally up to 12 inches in diameter. Some larger tools are available.
- Effective for cleaning manholes using a scouring gun.

b. Pipe size range:

- Most effective in 6-inch to 18-inch pipes. The effectiveness in larger pipes is reduced, especially on grease.
- Materials can be cleaned from the invert of larger pipes by using a weighted nozzle.

c. Technique advantages:

- Access to the downstream manhole only is required.
- Threading the sewer line is not necessary; often used for threading sewer lines for other cleaning or inspection equipment.
- Setup is fast.
- Fast method for light cleaning and removal of blockages.
- Operation is comparatively easy.
- Effective for final cleaning prior to rehabilitation work.
- Low pipe damage potential except in badly deteriorated pipe.
- Few operator safety hazards are involved.

- Jet cleaning provides ventilation when the upstream manhole cover is removed.

d. Technique limitations:

- Water must be available reasonably near the work site.
- Least effective on large and heavy materials such as roots, rocks, bricks.
- Can cause cavitation of backfill outside broken pipe.
- Does not provide for removal of materials from the manhole.

4. Hydraulically Propelled Equipment (cleaning ball, hinged-disc cleaner)

a. Materials removed:

- Most effective for cleaning pipes of light solids such as sludge, mud, and sand.
- Fair applicability for dislodging and transporting gravel, rocks, and grease.

b. Pipe size range:

- Generally 8-inch to 36-inch pipes.
- Best in intermediate sizes, with extreme caution required in large pipes (see Cleaning Precautions, Section 8.09 of these Specifications).

c. Technique advantages:

- Crew access only to upstream and downstream manholes.
- Minimum equipment requirements.
- Operation is easy.
- Few safety hazards are involved, except manhole entry.

d. Technique limitations:

- A large quantity of water is required at or upstream of the site.
- Basement flooding is a real possibility; may be used only where head in sewer will not exceed basement drain elevations.
- Not applicable for removal of blockages. Sewer must be flowing.
- Does not provide for removal of materials from the manhole.
- Caution is required when using hydraulically propelled devices in large pipes due to the large propulsive force and the possibility of getting the equipment stuck in the sewer line with dig-up becoming the only solution.

5. Debris Removal Equipment (including, combination machines)

Vacuum machines are primarily used for catch-basin cleaning and are often used for removal of materials from manholes when other cleaning equipment is used to dislodge and transport the materials to the access point. Some vacuum machines can remove heavy materials such as bricks. Most machines can

separate solid materials from cleaning water and transport the debris to a dumpsite.

Note; A vacuum machine in combination with a jet machine is called a "combination machine."

Trash pumps are frequently used to remove sludge, mud, sand, and gravel from manholes.

Trailers (sometimes containing pumps, tanks and settling baffles) are frequently used to separate solid materials from cleaning water and to transport the debris to a dumpsite.

#### C6.09 CLEANING PRECAUTIONS

The Contractor shall be aware of several precautions to be taken during cleaning operations.

Clean soil and pieces of broken tile observed in a manhole trough are strong indications of broken, crushed, or collapsed pipe in the upstream section. Exercise due caution.

Full gage cleaning tools are subject to getting "hung up" on off set joints, intruding service connections, root masses, and other obstructions. Use tag cable and winch to retrieve cleaning tools and devices if necessary.

Pipe damage is possible any time powerful cleaning equipment is used. Match cleaning equipment and tools to both the pipe conditions to avoid pipe damage.

When bucket machines are used, employ downhole cable rollers. Properly installed, the lower "V" of the roller should be just below the top of the sewer pipe so the cable does not rub or catch on the entrance to the pipe. The roller must be high enough to permit free passage of the bucket into and out of the sewer pipe.

When hydraulically propelled cleaning tools (which depend on water pressure to provide their cleaning force) or any equipment which retards the flow in the sewer is used, there is a real possibility of a sewage back-up resulting in flooding and property damage. When a hydraulically propelled cleaning tool stops moving downstream for any reason (e.g., stopped by a roller in a downstream manhole), a sewage back-up starts to take place, especially if water is being added from an upstream hydrant. The Contractor should be on the lookout for such a situation.

#### C6.10 DISPOSAL OF MATERIALS

Solids or semisolids resulting from the cleaning operations shall be removed from the site and disposed of at a site designated by the District Engineer. All materials shall be removed from the site at the end of each workday. The Contractor may be allowed to accumulate debris at the work site beyond the stated time in enclosed containers and as approved by the District Engineer.

#### C6.11 ROOT REMOVAL

Roots shall be removed in the designated sections where root intrusion is a problem. Special attention shall be used during the cleaning operations to assure almost complete removal of roots from the joints prior to joint sealing. Roots, which could prevent the seating of the packer or could prevent the proper application of chemical sealants must be removed. Procedures may include the use of mechanical equipment such as rodding machines, bucket machines and winches using root cutters, root saws, porcupines, and jet machines equipped with hydraulically driven cutters.

#### C6.12 CHEMICAL ROOT TREATMENT

To aid in the control of roots, manhole sections that have root intrusion shall be treated with an Environmental Protection Agency (EPA) registered herbicide. The application of the herbicide to the roots shall be done in accordance with the manufacturer's recommendations and in such a manner to preclude damage to surrounding vegetation. Damaged vegetation shall be replaced by the Contractor at no additional cost to the District. Safety precautions as recommended by the manufacturer shall be adhered to concerning handling and application of the herbicide.

#### C6.13 CHEMICAL ROOT TREATMENT METHODS

With the following application methods, roots absorb the killing agent and inhibitor. Soil in the sewer joints absorbs the inhibitor allowing it to be effective for as much as three years in open joints.

The material may be applied by the "soak" method by plugging the lower end of the line to be treated, filling it with a 1 percent fumigant solution for an hour or longer, and then allowing the solution to flow downstream to the next manhole section to be treated.

The preferred method of treating roots with a foam fumigant is as follows: The foam generator is set up at the downstream manhole. The fumigant hose is pulled through the sewer to the upstream manhole. The foam generator is then started and run until foam shows at the upstream manhole. The hose is then retrieved at a rate given on a chart provided by the equipment supplier (approximately 0.7 foot per second or 42 feet per minute in an 8-inch pipe). Foaming is terminated when foam appears at the downstream manhole. No plugs need to be used as the sewage will flow under the foam and does not rapidly wash it away. The foam tends to cling to the upper portion of the sewer giving the roots time to absorb the fumigant.

#### C6.14 FINAL ACCEPTANCE

Acceptance criteria for sewer line cleaning shall be as specified in the contract. Acceptance of sewer cleaning will be made upon the successful completion of the television inspection if specified in the contract. If TV inspection shows the cleaning to be unsatisfactory, the Contractor shall reclean and reinspect the sewer line until the cleaning is shown to be satisfactory. If internal sealing is to follow the television inspection, particular attention shall be given to the adequacy of the cleaning to insure that proper seating of the sealing packer can be achieved.

#### C6.15 VARIABLES WHICH AFFECT THE DIFFICULTY OF SEWER CLEANING

The Contractor should be familiar with the many variables which may have impact on his performance, production and cost on any particular sewer cleaning job. Some variables apply to each manhole section to be cleaned.

1. Locating, exposing, removing manhole covers.
2. Access to manholes, terrain, traffic control requirements.
3. Condition of the manholes – steps, cleanliness, structure.
4. Depth of the sewer – difficulty of entry and debris removal.
5. Size of the pipe.
6. Depth and velocity of sewage flow.
7. Structural integrity of the pipe.
8. Off-set joints, intruding service connections, curved pipe.
9. Availability of hydrant water at or upstream of the site.
10. Depth of deposition in the pipe.
11. Type of solid materials to be removed, arranged in order of increasing difficulty – sludge, mud, sand, gravel, rocks, grease, bricks, and roots. Roots are difficult to remove completely and may be a significant factor.
12. Degree of cleanliness required – see Intent, Article C8.01 of these specifications.
13. Productivity differences in cleaning successive vs. random manhole sections.
14. Requirements for transportation and disposal of solid material and distance to the disposal site.

## SECTION C7 – SEWER FLOW CONTROL

### C7.01 INTENT

Most television inspection, joint testing, and/or sealing operations require minimal, or at least acceptable, depth of operations to be performed effectively. Excessive depth of flow will inhibit and may even prevent some cleaning, inspection and rehabilitation procedures. The Contractor shall abide by the provisions, requirements, specifications and responsibilities for sewer flow control (if any) that are contained in the contract. Attention by the Contractor is directed to Article C1.09, Safety and Health Provisions, of these Specifications with respect to CAL OSHA rules and regulations to follow before entering manholes.

### C7.02 DEPTH OF FLOW

For effective television inspection, joint testing and/or sealing operations, the depth of flow at the upstream manhole of the manhole section being worked shall (where practical) be within the recommended limits given below:

#### Maximum Depth of Flow for Television Inspection:

6"-10" Pipe	20% of pipe diameter
12"-24" Pipe	25% of pipe diameter
27"& up Pipe	30% of pipe diameter

#### Maximum Depth of Flow for Joint Testing/Sealing

6"-12" Pipe	25% of pipe diameter
15"-24" Pipe	30% of pipe diameter
27" & up Pipe	35% of pipe diameter

When depth of flow is greater than recommended for television inspection, joint testing and/or sealing, the flow shall be reduced by plugging, or by pumping and bypassing of the flow.

### C7.03 PLUGGING

A sewer line plug may be installed upstream of the section being worked. The plug shall be designed to permit a portion of the sewage to be released. After the work has been completed, sewage flow shall be restored to normal. Sewer plugs are always installed in the upstream (incoming) pipe of a manhole. It is desirable that the plug be equipped with an air hose to permit deflation from above ground. A strong rope shall be attached to enable the plug to be quickly pulled out of the manhole. Care must be taken to prevent a plug from being pushed into the outgoing pipe when the back-up sewage is released.

### C7.04 PUMPING AND BYPASSING

When pumping and bypassing is required, pumps, conduits, and other equipment shall be furnished to bypass the flow of sewage around the manhole section in which work is performed. The bypass system shall have sufficient capacity to handle the existing flow plus additional flow that may occur.

#### C7.05 FLOW CONTROL PRECAUTIONS

When the flow in a sewer line is reduced, plugged, or bypassed, precautions shall be taken to insure that the operations do not cause flooding or damage to public or private property. The Contractor shall closely monitor sewer surcharging upstream of the manhole section being worked and be alert for situations such as residential flooding that would be likely to occur, particularly where there are steep sewers serving houses with basements having floor drains or toilet facilities.

## SECTION C8 – TELEVISION INSPECTION

### C8.01 EQUIPMENT AND TV PICTURE QUALITY

The TV camera shall be specifically designed for sewer inspection: small, rigged, and waterproof. The camera shall have its own light source suitable to provide a clear picture of the entire periphery of the pipe and defects. The camera shall be able to rotate and look directly into the lateral providing clear sharp images.

The camera, television monitor, and other components of the video system shall be capable of producing a picture quality which is adequate for the purpose of inspection as stated in the contract.

Attention by the Contractor is directed to Article C1.09, Safety and Health Provisions, of these Specifications with respect to CAL OSHA rules and regulations to follow before entering manholes.

### C8.02 TV INSPECTION PROCEDURES

Clean the designated sewer lines prior to conduction closed circuit television inspections.

The camera shall be moved through the line in either direction at a moderate rate, stopping when necessary to permit proper documentation of the sewer condition. For a detailed inspection, the camera shall not travel a speed greater than 30 feet per minute. Manual winches, power winches, TV cable power rewinds, self-propelled cameras or other approved methods shall be used to move the camera through the sewer line.

Conduct a television inspection of each designated sewer line to determine obstructions, pipe deficiencies, infiltration locations, lateral locations, and any other abnormalities. At each such location pan the camera to the side to view the area in more detail. Also take a still digital photo of each problem area.

Each photographic image shall be saved in a JPEG file format and named with the footage of the event to the nearest tenth of a foot without a decimal point followed by an abbreviation indicating the type of event. The files shall be stored within file folders named for the upstream manhole numbers. Make a general assessment of the general conditions of each sewer section, and each manhole used for setup, relative to other sewer sections and manholes.

Contractor will provide a video log of each section of pipe televised stating the date televised, direction of camera, pipe size and type, manhole inverts, conditions of manholes and pipe and commentary on findings. Locate where still photographs were taken on the logs.

Contractor will provide digital images on CDs or 3 ½ inch floppy disks.

Contractor will provide labeled videotapes of the inspections in VHS-format.

If, during the inspection operation, the television camera will not safely pass through the entire sewer section, the Contractor shall set up his equipment so that the inspection can be performed from the opposite manhole. If, again the camera fails to pass through the

entire sewer section, the inspection of the sewer section is considered complete for purposes of payment.

#### C8.03 DISTANCE MEASUREMENTS

The Contractor shall record reasonably accurate distance measurements for the purpose of locating defects. Distance measurements shall be made above ground by means of a meter device (footage meter) on the TV cable. The footage meter shall have an error not to exceed +/-2% or 2 feet per 100 feet.

The Contractor shall check that the crew sets the footage meter to indicate the distance from the center of the near manhole to the pipe location which is in clear focus on the television monitor. This shall be done by the following procedure:

1. Measure the length of the pipe to the first or second joint outside the manhole.
2. Move the camera into the pipe and secure the TV cable roller in place.
3. Take the slack out of the TV cable and move the camera into the pipe until the measured joint appears in clear view and focus on the television monitor.
4. Add the radius of the manhole (usually 2 feet) to the measured joint distance and set this initial number on the footage meter.

The Contractor shall check the accuracy of the distance measurements when corrective action or a dig-up may be required by the District. The accuracy of the footage meter shall be checked by taking a reading at the entrance to the away manhole and comparing with a surface measurement made with steel tape or walking meter (Roll-A-Tape).

#### C8.04 DOCUMENTATION

Documentation of television inspection by the Contractor shall be performed in accordance with the specifications. The documentation (entering data on inspection logs) shall be properly, accurately and legibly done during (not after) the TV inspection of each manhole section. TV reports can be assembled elsewhere, but documentation must be done in the field.

The following methods of documentation shall be used in combination:

1. **Television Inspection Logs:** Written records show the location in relation to an identified manhole of each infiltration point observed during inspection. In addition, other points of significance such as locations of building sewers, unusual conditions, roots, storm sewer connections, broken pipe, presence of scale and corrosion, and other discernible features are recorded and a copy of the records is supplied to the District.
2. **Videotape and Digital Photos Recordings:** The purpose of tape recording and Digital Photos is to obtain a visual and audio record of the pipe conditions that may be replayed at a later time.

TV inspection logs should contain the following information:

- District's name
- Inspector's Name
- Crew Chief's Name
- Date
- From MH No. \_located at \_
- To MH No. \_located at \_
- Direction of Flow
- Type of Pipe
- Type of Joints, if apparent
- Joint Spacing
- Cleanliness
- Manhole Conditions
- Section Length
- Pipe Size
- Depth of Pipe
- Direction of Inspection (camera movement)
- Locations where digital photos were taken.

Pipe defects shall be located by footage and clock reference and shall be described using the following terms:

Cracked Pipe-	crack lines visible, pieces still in place
Open Crack-	crack openings visible, pieces still in place
Broken Pipe-	pieces displaced, some pieces may be missing
Crushed Pipe-	extensively broken and out-of-round pipe
Collapsed Pipe-	all structural integrity lost, pipe flattened
Circumferential Defect-	a circular defect
Longitudinal Defect-	parallel to the pipe axis
Erosion-	pipe worn away by the flow, generally at the bottom
Corrosion-	pipe deteriorated by acid attack, generally at the top
Dip-	a divergence in the alignment of pipes
Misalignment-	a divergence in the alignment of pipes
Offset Joint-	the spigot is not concentric with the bell
Off-	set Lateral
Separated joint-	longitudinal displacement of pipes
Plugged or Broken Lateral	
Infiltrating Joint-	groundwater entering pipe at joint

## C8.05 TERMS USED IN INSPECTION REPORTS

The Contractor shall be familiar with the terms used to describe and document sewer construction and pipe conditions, at least to the extent required for adequate and accurate interpretation of reports by the District. Generally accepted terminology follows:

### Manhole Components:

Aprons (bench) -	standing room at the bottom of the manhole, containing the trough
Base-	the structural foundation of the manhole
Corbel-	that portion of a manhole structure which slopes upward and inward from the barrel of the manhole to the manhole frame
Depth of Invert-	the distance from the top of the manhole ring (street surface) to the sewer invert
External Drop-	incoming sewage drops to the trough in a vertical pipe outside the manhole wall
Internal Drop-	incoming sewage free-falls in the manhole to the trough
Invert-	the floor, bottom or lowest point of a conduit (sewer)
Invert Elevation-	the height above sea level of the sewer invert
Manhole Ring (frame)-	usually an iron casting used to top off the manhole and to act as the base for the cover
Trough-	the channel at the bottom of the manhole through which sewage flows
Walls-	the vertical (usually cylindrical) portion of the manhole

## C8.06 TYPES OF PIPE (Abbreviations)

Acrylonitrile-butadiene-styrene (ABS)  
Asbestos-Cement (AC)  
Brick Pipe (BP)  
Cast Iron Pipe (CIP)  
Concrete Pipe (CP)  
Corrugated Metal Pipe (CMP)  
Polyethylene (PE)  
Polyvinyl Chloride (PVC)  
Reinforced Concrete (RC)  
Reinforced Plastic Mortar (RPM)  
Steel Pipe (SP)  
Vitrified Clay Pipe (VCP)

### C8.07 TYPES OF SEWER PIPE JOINTS

Asphaltic/Bituminous  
Cement Mortar  
Compression Gasket (e.g. O-ring, molded elastomeric seal)  
Solvent Weld (e.g. ABS & PVC pipe)  
Thermal Weld (e.g. Polyethylene pipe)

### C8.08 TYPES OF SERVICE CONNECTIONS

Intruding Service Connection –is a building sewer pipe inserted into the street sewer (often through a hole broken through the side of the street sewer) which intrudes into the sewer

Saddle Tap– is a device mused for a cut –in connection.

Tee– manufactured pipe fitting, enters pipe at 90° angle.

Wye– manufactured pipe fitting, enters pipe at less than 90° angle.

### C8.09 TYPE OF DEBRIS (in order of increasing difficulty of removal)

Sludge–	organic materials
Silt–	light soil
Mud–	clay sand
Sand–	sand, soil and grit
Gravel–	smaller than 0.5 inch
Rocks–	larger than 0.5 inch
Bricks	
Grease	
Roots	
Roots Curtains–	growth fills most of area above water level
Roots Blockage–	growth fills the pipe and causes a stoppage

### C8.10 VARIABLES WHICH AFFECT THE DIFFICULTY OF TV INSPECTION

The Contractor should be familiar with the many variables which may have impact on his performance. Some variables applying to each manhole section to be inspected are as follows:

1. Locating, exposing, removing manhole covers.
2. Access to manholes, terrain, traffic control requirements.
3. Condition of the manholes, steps, cleanliness, structure.
4. Depth of the sewer, difficulty and safety of entry.
5. Depth and velocity of sewage flow.
6. Availability of water for threading the sewer line.
7. Plugging requirements – ability to plug, necessity to bypass.

8. Presence of explosive gas or combustible liquid.
9. Off-set joints, intruding joint materials, intruding service connections, curved pipe, crushed pipe and other obstructions which could prevent the passage of the camera.

## SECTION C9 – SMOKE TESTING

### C9.01 EQUIPMENT

The Contractor shall provide a portable blower designed and built specifically for the use of smoke testing. The blower shall be self-contained and powered by a minimum three (3) horsepower (HP) gasoline engine and be capable of producing a minimum of 1800 cubic feet of air per minute. In addition to the blower, the Contractor shall provide all other equipment and tools and incidentals required to perform smoke testing as required by these specifications.

Attention by the Contractor is directed to Article C1.09, Safety and Health Provisions, of these Specifications with respect to CAL OSHA rules and regulations to follow before entering manholes.

### C9.02 SMOKE BOMB

The smoke bombs shall produce a chemical reaction generating white gray smoke, leaving no residue, and shall be non-toxic and non-explosive. Each bomb shall be capable of producing 100,000 cubic feet of smoke within five (5) minutes.

Manufacture's literature on the smoke bombs to be used in this project shall be provided by the Contractor for review by the District Engineer prior to commencement of any work.

### C9.03 PERSONNEL

The Contractor's employees performing the smoke testing under the provisions of these Specifications shall be properly trained in the use of the equipment and procedures. As a minimum, they shall have at least fifteen (15) days of previous testing experience. The fifteen (15) days of experience shall have been acquired within a maximum of six (6) months prior to the date of award of this contract, unless specifically waived by the District. A list of employees to be used shall be provided to the District upon request.

### C9.04 PROCEDURE

Upon award of the Agreement by the District and PRIOR TO COMMENCING ANY WORK, the Contractor shall provide a complete WORK SCHEDULE to the District Engineer for review and approval. The Work Schedule shall be typed and shall indicate the planned progress for the proposed work.

The Work Schedule shall indicate the following:

- a. Street Name (In easements – the names of the abutting streets).
- b. Street Limits (Cross streets or property addresses).
- c. Upstream and Downstream Manhole Numbers (from District Maps).
- d. Date of Testing.
- e. Starting Time.
- f. Ending Time.

The Contractor shall not commence testing before 8 a.m. and shall terminate testing no later than 4 p.m. each day. If the Contractor wishes to test before 8 a.m. in commercial areas of the District, such testing shall be shown on the submitted WORK SCHEDULE and is subject to the approval of the District Engineer. Smoke Testing shall not be performed on weekends or holidays without prior approval of the District Engineer.

Once the District Engineer approves the WORK SCHEDULE, the Contractor shall not make any revisions or modifications to it without the WRITTEN APPROVAL of the District Engineer.

The Contractor shall not perform smoke testing on days that, in the opinion of the District Engineer, will hinder the results of the test.

#### C9.05 NOTIFICATION AND PUBLIC INFORMATION

1. The Contractor shall notify all providers of emergency service by phone daily of the area to be tested the next day of work. Notification shall be 24 hours in advance of the testing.

Providers of emergency services shall include the police, fire and medevac agencies which serve the area being smoke tested.

It shall be the Contractor's responsibility to keep adequate records of all notifications to emergency services and to produce them upon request by the District. Failure to comply with this requirement may be cause for the District to suspend the Contractor's operations until compliance is achieved.

2. The Contractor shall notify, by hand delivery of a notification letter to each address, all RESIDENCES AND BUSINESSES in the area to be tested 48 hours in advance of the testing.
3. The Contractor shall require all personnel to demonstrate good judgement in performing the testing. The Contractor shall take appropriate action to insure that his employees are polite to the public in all aspects of the work and that immediate assistance is provided to property owners if needed.

#### C9.06 RECORDS

1. The Contractor shall prepare and submit 2 bound report copies of the smoke testing to the District Engineer. The report shall contain a typed log that clearly identifies each sewer main tested. For each sewer main tested, the log shall identify each point of smoke exfiltration from:
  - a. Roof gutters
  - b. Sewer Cleanouts
  - c. Leakage in house laterals
  - d. Patio or area drains
  - e. Storm drain cross connections
  - f. Any other source not stated above
2. The points of exfiltration, as identified above, shall be referenced to permanent landmarks and/or house or lot numbers. Record the magnitude and locations of

smoke emissions using a laser measuring system, digital camera and field work sheets.

All smoke testing information shall be accurately and neatly recorded on field worksheets and on 200 scale maps (1 in. = 200 ft.) or other maps of suitable scale as provided by the District. The form of the field worksheet shall be approved by the District Engineer prior to the commencement of work by the Contractor.

Provide two (2) complete copies of a bound report including a copy of the photographs, descriptions of the smoke emissions and maps showing the location of each emission. Also provide digital images on CDs or 3 ½ inch floppy disks.

#### **C9.07 SAFETY**

The Contractor and his personnel shall be aware of and follow all Federal, State and Local safety laws and regulations. Specific attention is directed to Article C1.09 Safety and Health Provisions of these specifications.

Prior to placing any smoke bombs into a manhole, the Contractor shall first evacuate the system with a blower.

The area of work shall at all times be protected by means of an adequate number of cones, barricades, flags or whatever means is necessary to properly and safely protect both vehicular and pedestrian traffic.

Any condition deemed to be an unsafe condition shall be immediately corrected by the Contractor. The failure of the District Engineer or its representatives to bring a potentially dangerous situation to the Contractor's attention shall not relieve the Contractor from his responsibility for providing a safe work area.

\*\*\* END OF SECTION C \*\*\*

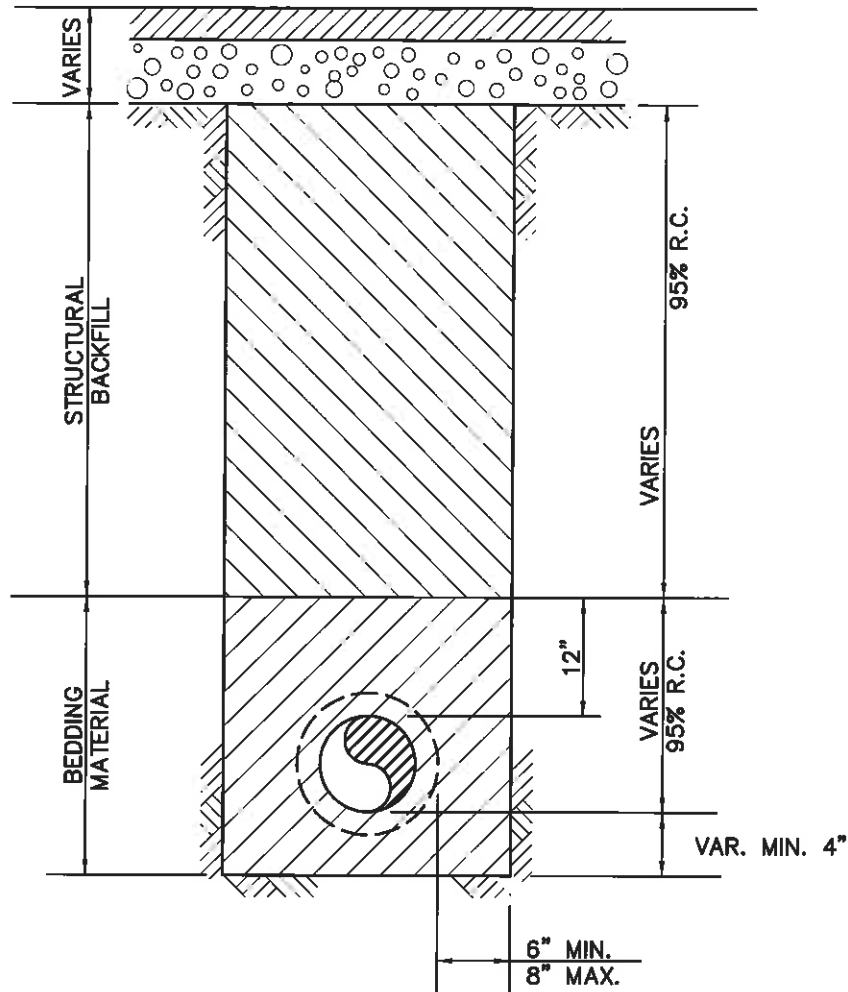
**PART D**  
**STANDARD DRAWINGS**

Standard No. 1	Standard Trench Detail
Standard No. 2	Manhole Frame and Cover
Standard No. 3	Pressure Type Manhole Frame and Cover
Standard No. 4	Standard Manhole
Standard No. 5	Manhole Drop Inlet
Standard No. 6	Flushing Inlet or Lamphole
Standard No. 7	Service Lateral Connection
Standard No. 8	Lateral Connection to Sewer Main - Type 1 & Type 2
Standard No. 9	Lateral Connection to Existing VCP Main - Type 3
Standard No. 10	Strap on Lateral Connection to HDPE or PVC Pipe - Type 4
Standard No. 11	Typical Service Lateral Cleanout
Standard No. 12	<del>Backflow Prevention Device</del> <b>DELETED</b>
Standard No. 13	Sewer Support Across Trenches
Standard No. 14	Side Sewer at Utility Intersections

STANDARD NO. 12

**DELETED (3/24/2018)**

ROAD SECTION PER  
DALY CITY OR  
CITY OF BRISBANE  
STANDARDS



TYPICAL TRENCH SECTION

**BEDDING MATERIAL**

GRANULAR BEDDING MATERIAL REQUIREMENTS  
(ASTM D448 SIZE #67)

SIEVE SIZES      PERCENTAGE PASSING

1"	100
3/4"	90-100
3/8"	20-55
#4	0-10
#8	0-5

OR

SAND THAT IS FREE FROM CLAY OR ORGANIC  
MATERIAL WITH 90 - 100% PASSING A #4 SIEVE  
AND LESS THAN 5% PASSING A #200 SIEVE.

**STRUCTURAL BACKFILL**

STRUCTURAL BACKFILL REQUIREMENTS  
(CALTRANS CALIF. TEST 202) MIN. SAND  
EQUIVALENT OF 20.

SIEVE SIZES      PERCENTAGE PASSING

1-1/2"	100
3/4"	80-100
#4	30-60
#30	5-35
#200	0-12

APPROVED BY:

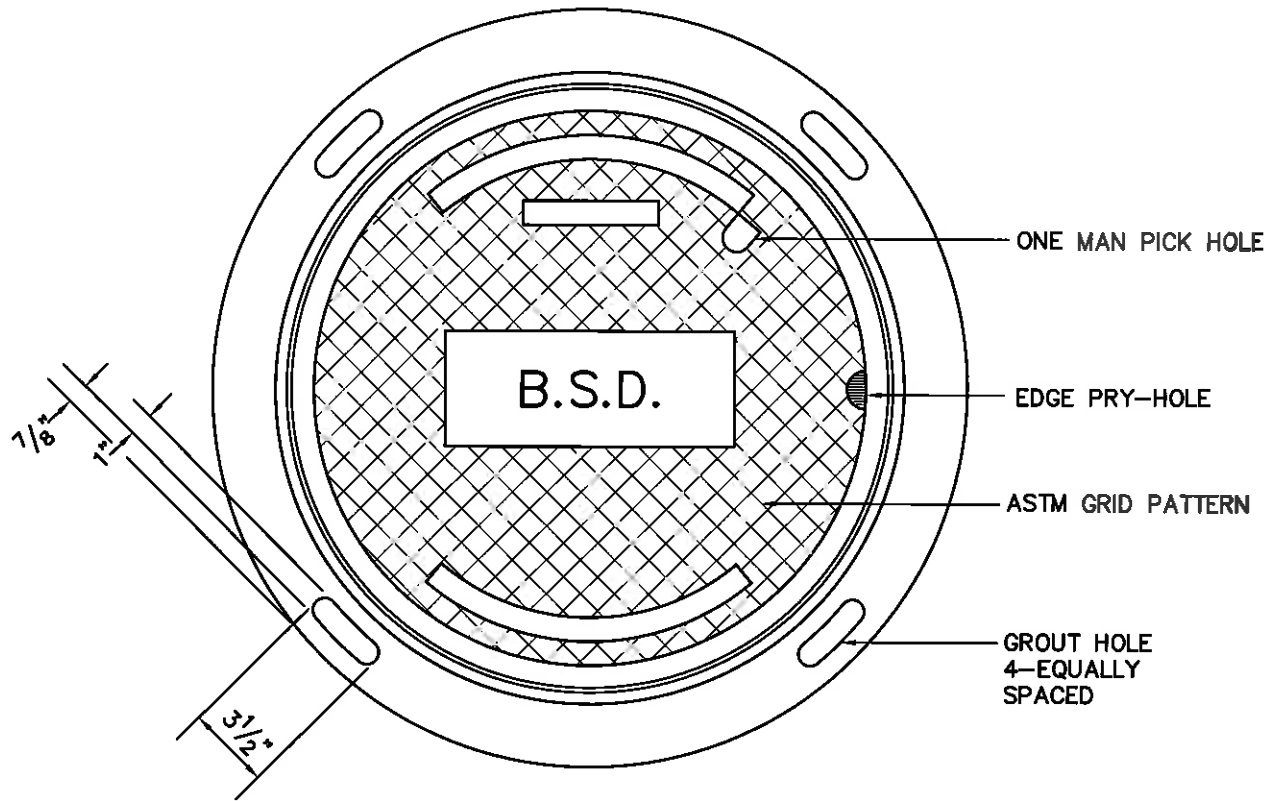
BAYSHORE SANITARY DISTRICT  
STANDARD DETAIL

STANDARD No.

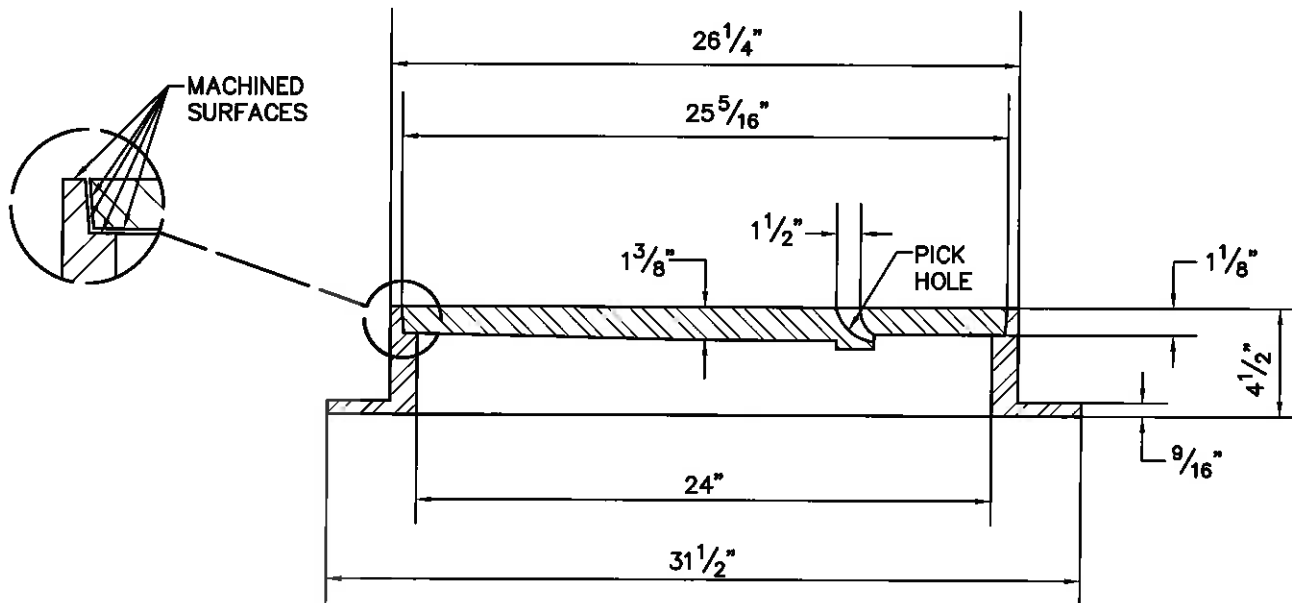
DATE: FEB 2006

STANDARD TRENCH DETAIL

1



PLAN



SECTION

SCALE: 1 1/2" = 1'-0"

NOTE: ALL MATERIAL SHALL CONFORM TO ASTM SPECIFICATION A-159-70T-G3000

APPROVED BY:

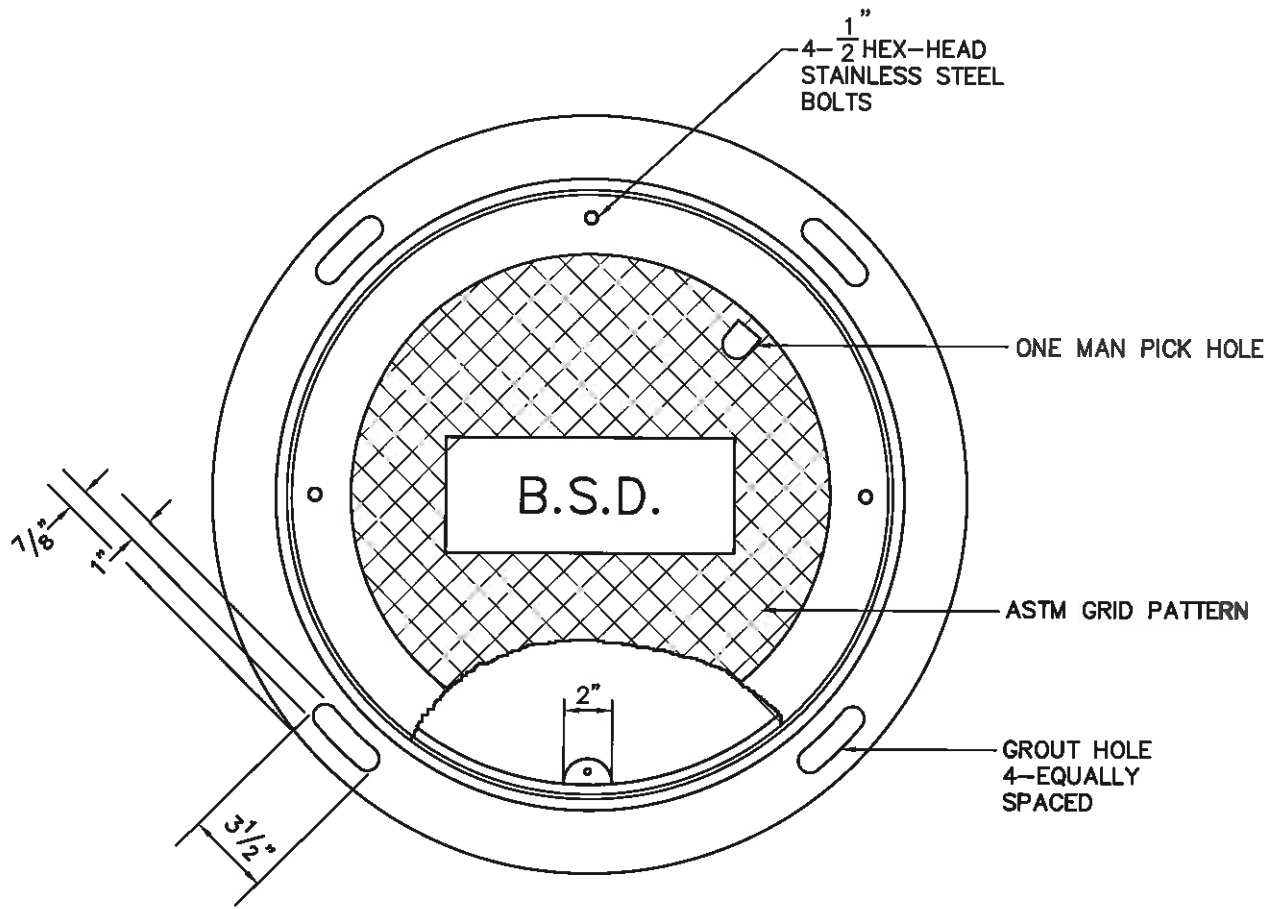
BAYSHORE SANITARY DISTRICT  
STANDARD DETAIL

STANDARD No.

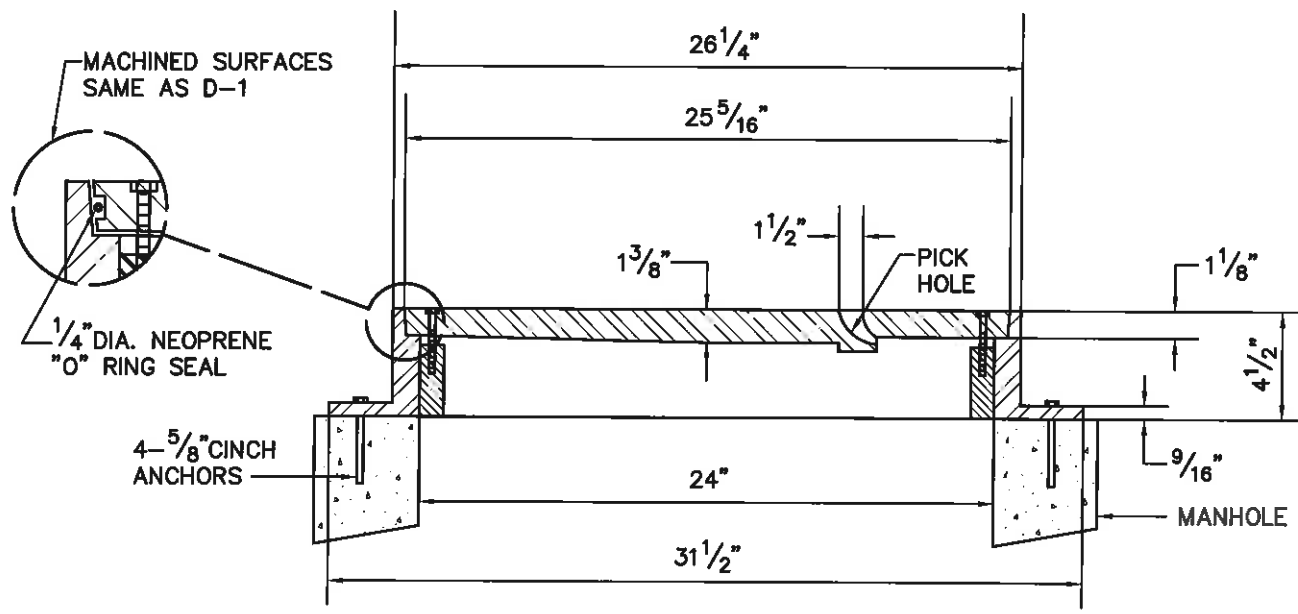
DATE: FEB 2006

MANHOLE FRAME AND COVER

2



PLAN



SECTION

SCALE: 1 1/2" = 1'-0"

- NOTES:
1. MAXIMUM ALLOWABLE PRESURE SHALL BE 10 P.S.I.
  2. ALL MATERIAL SHALL CONFORM TO ASTM SPECIFICATION A-159-70T-G3000

APPROVED BY:

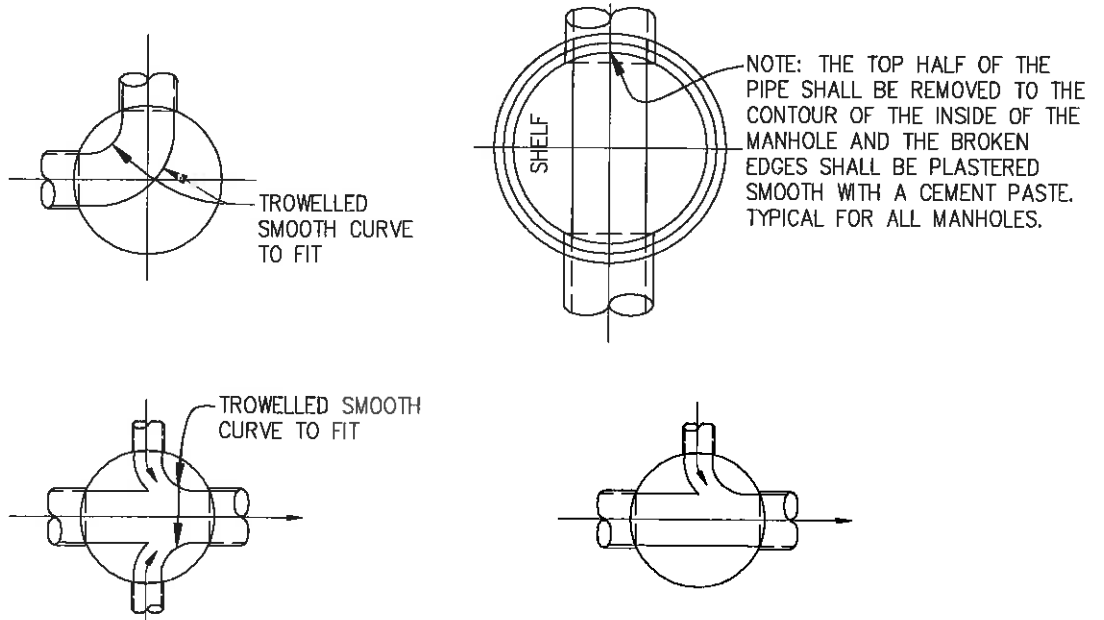
BAYSHORE SANITARY DISTRICT  
STANDARD DETAIL

STANDARD No.

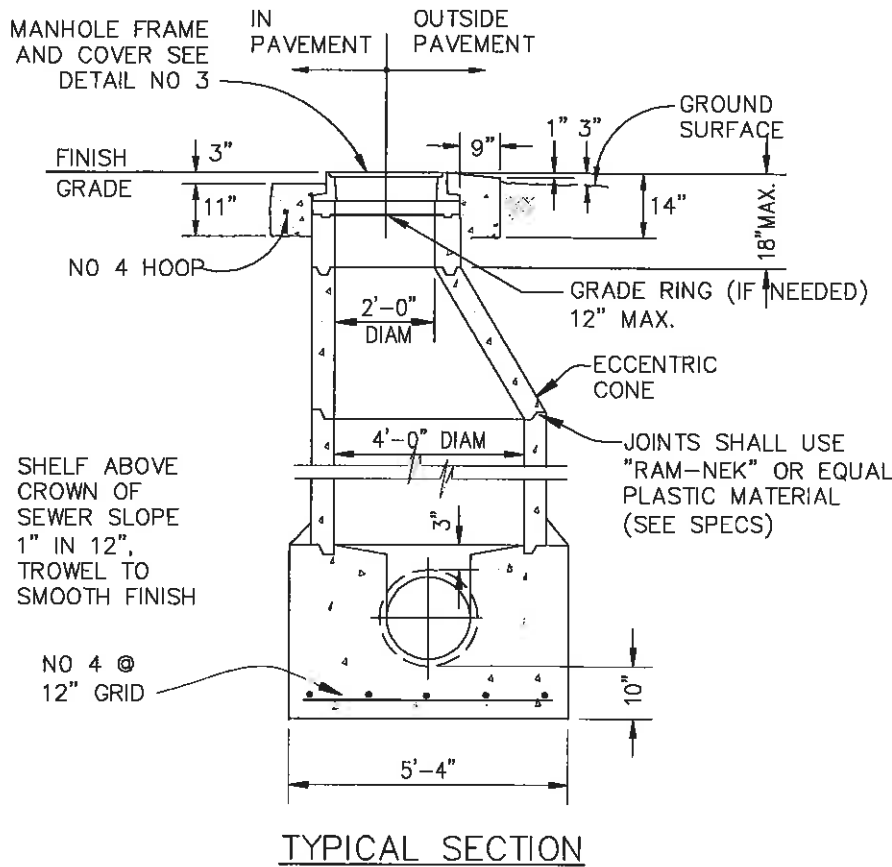
DATE: FEB 2006

PRESSURE TYPE  
MANHOLE FRAME AND COVER

3



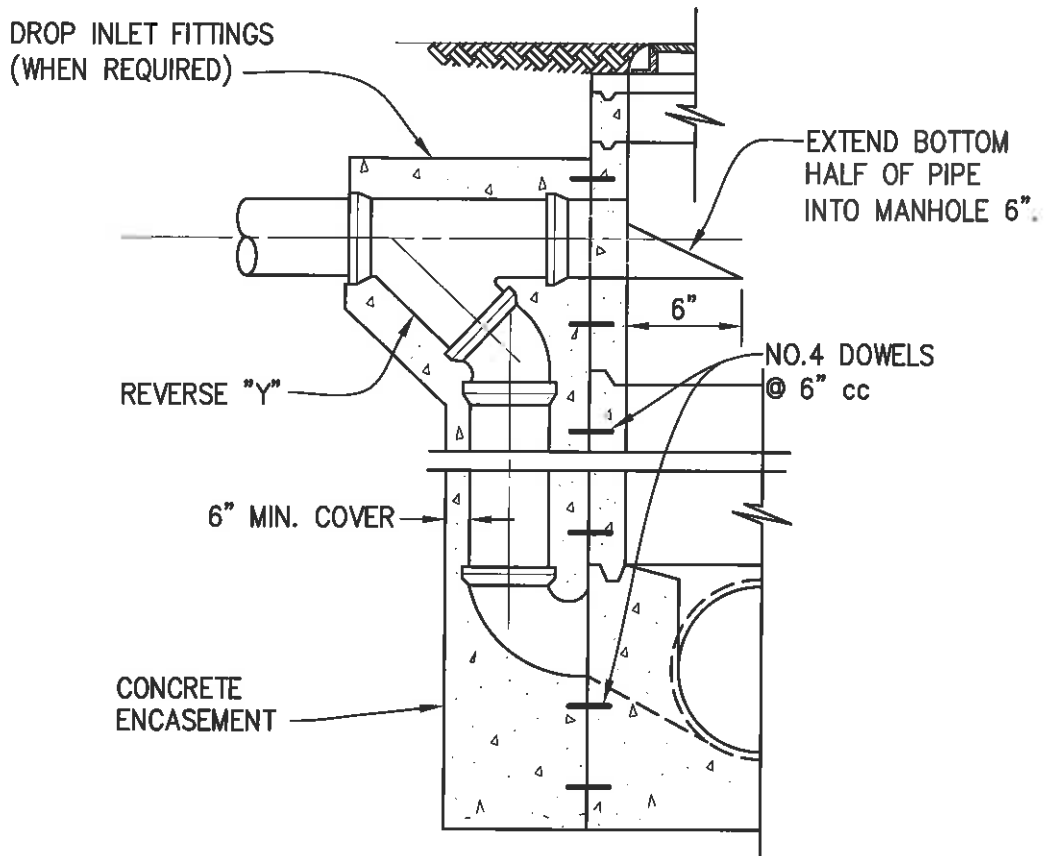
TYPICAL CHANNEL CONFIGURATION PLANS



NOTES:

1. PROVIDE 3" MIN. COVER ON REBAR.
2. MANHOLE SHELF SHALL BE MORTARED TO A SLOPE OF 1"/FT.
3. PREFORMED PLASTIC SEALING GASKET SHALL BE "RAM-NEK" OR APPROVED EQUAL.
4. STANDARD WATER STOPS OR GASKETED MANHOLE COUPLINGS SHALL BE INCORPORATED INTO THE MANHOLE BASE FOR ALL PIPE PENETRATIONS.
5. MANHOLE OPENING TO BE OPPOSITE THE LARGEST SHELF AREA OR AS DIRECTED BY THE DISTRICT ENGINEER
6. CONCRETE SHALL BE 3/4" CLASS A.

APPROVED BY:	BAYSHORE SANITARY DISTRICT STANDARD DETAIL	STANDARD No.
DATE: FEB 2006	STANDARD MANHOLE	4

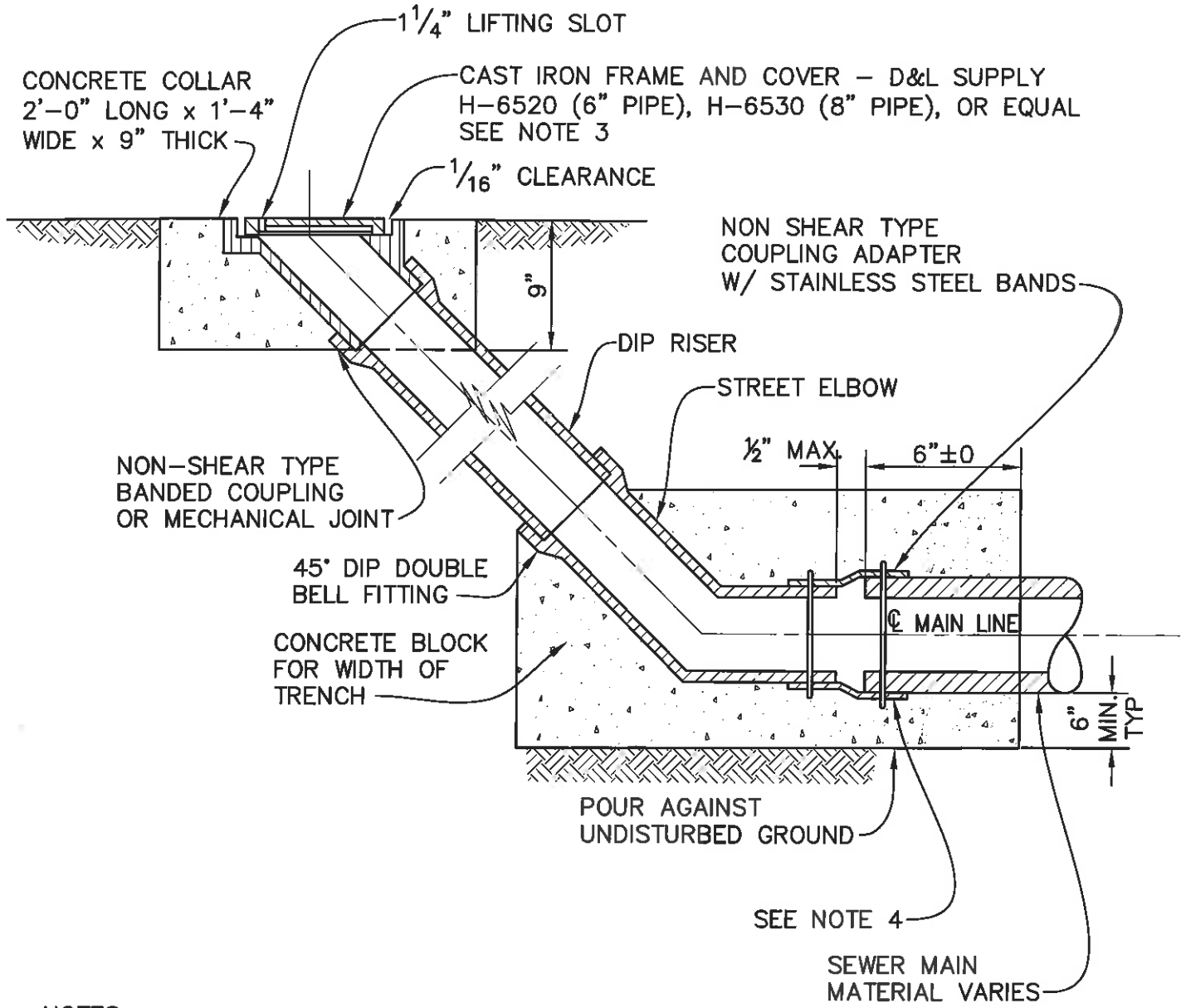


MANHOLES WITH DROP INLET

NOTES:

1. USE DROP INLET WHEN THE DISTANCE BETWEEN THE OUTLET PIPE INVERT AND THE INLET PIPE INVERT IS GREATER THAN 2 FEET.
2. WHERE DROP IS TOO LOW TO USE 1/8 AND 1/4 BENDS, ADJUST LOCATION OF "Y" SO THAT PIPE EXTENDS STRAIGHT FROM "Y" TO MANHOLE PENETRATION.

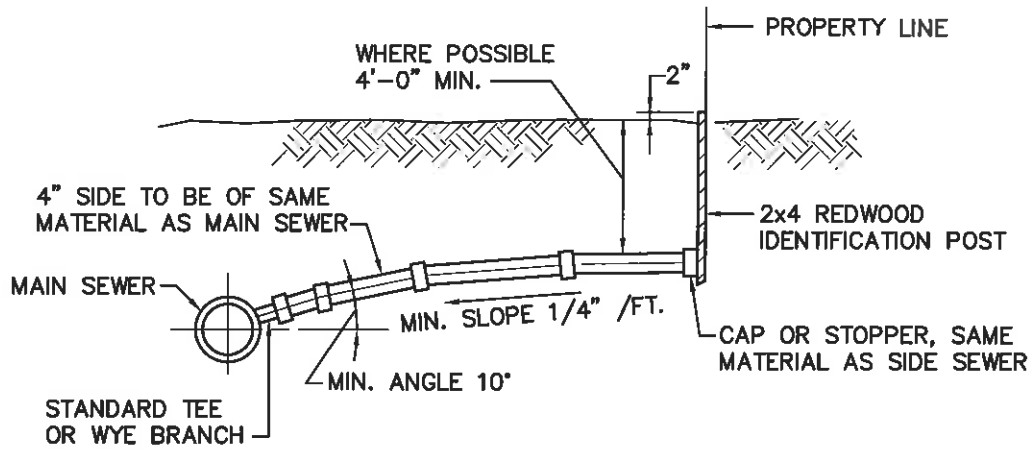
APPROVED BY:  _____	BAYSHORE SANITARY DISTRICT STANDARD DETAIL	STANDARD No.
DATE: FEB 2006	MANHOLE DROP INLET	5



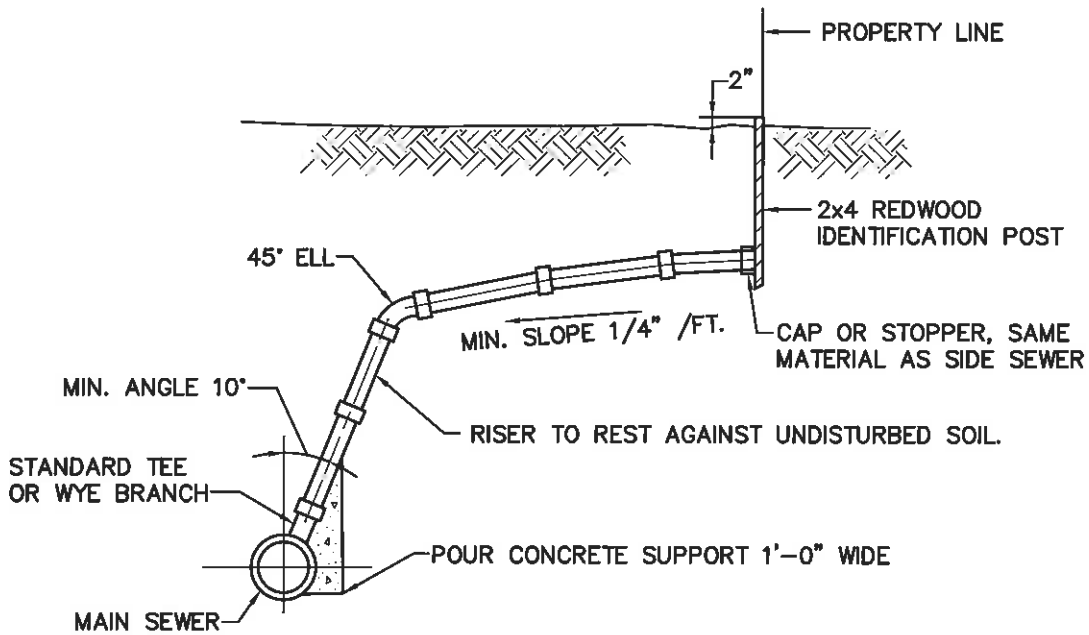
NOTES:

1. MAINLINE FLUSHING INLET OR CLEANOUT SHALL ONLY BE USED WHERE APPROVED BY DISTRICT ENGINEER.
2. CONCRETE ENCASE BANDED COUPLINGS 6" MIN.
3. COVER SHALL BE MARKED WITH "SEWER"
4. COAT CUT DUCTILE IRON PIPE ENDS WITH AN EPOXY SEALER.

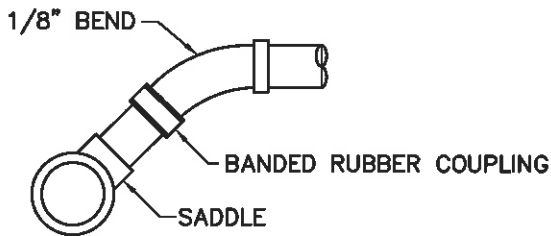
APPROVED BY:  _____	BAYSHORE SANITARY DISTRICT STANDARD DETAIL	STANDARD No.
DATE: FEB 2006	FLUSHING INLET OR LAMP HOLE	6



SHALLOW SEWER – 10' AND LESS



DEEP SEWER – GREATER THAN 10'



**SADDLE CONNECTION**  
TO BE USED UNLESS OTHERWISE  
APPROVED BY THE DISTRICT ENGINEER

- NOTES:
- 1) IN NEW SUBDIVISIONS WYES AND/OR TEES (AS APPROVED BY DISTRICT) SHALL BE INSTALLED FOR SIDE SEWER CONNECTIONS
  - 2) LATERAL MATERIAL TO BE OF SAME MATERIAL AS MAIN SEWER.

APPROVED BY:

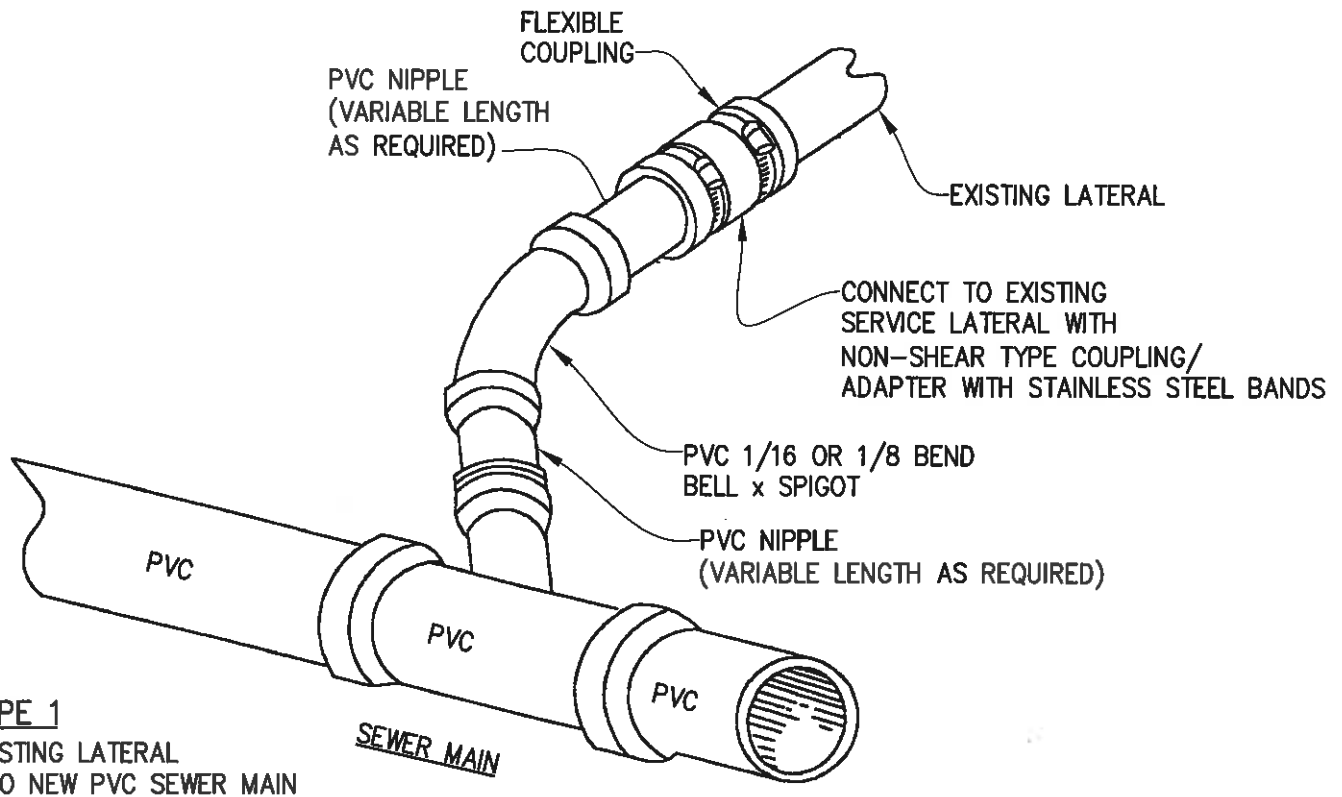
BAYSHORE SANITARY DISTRICT  
STANDARD DETAIL

STANDARD No.

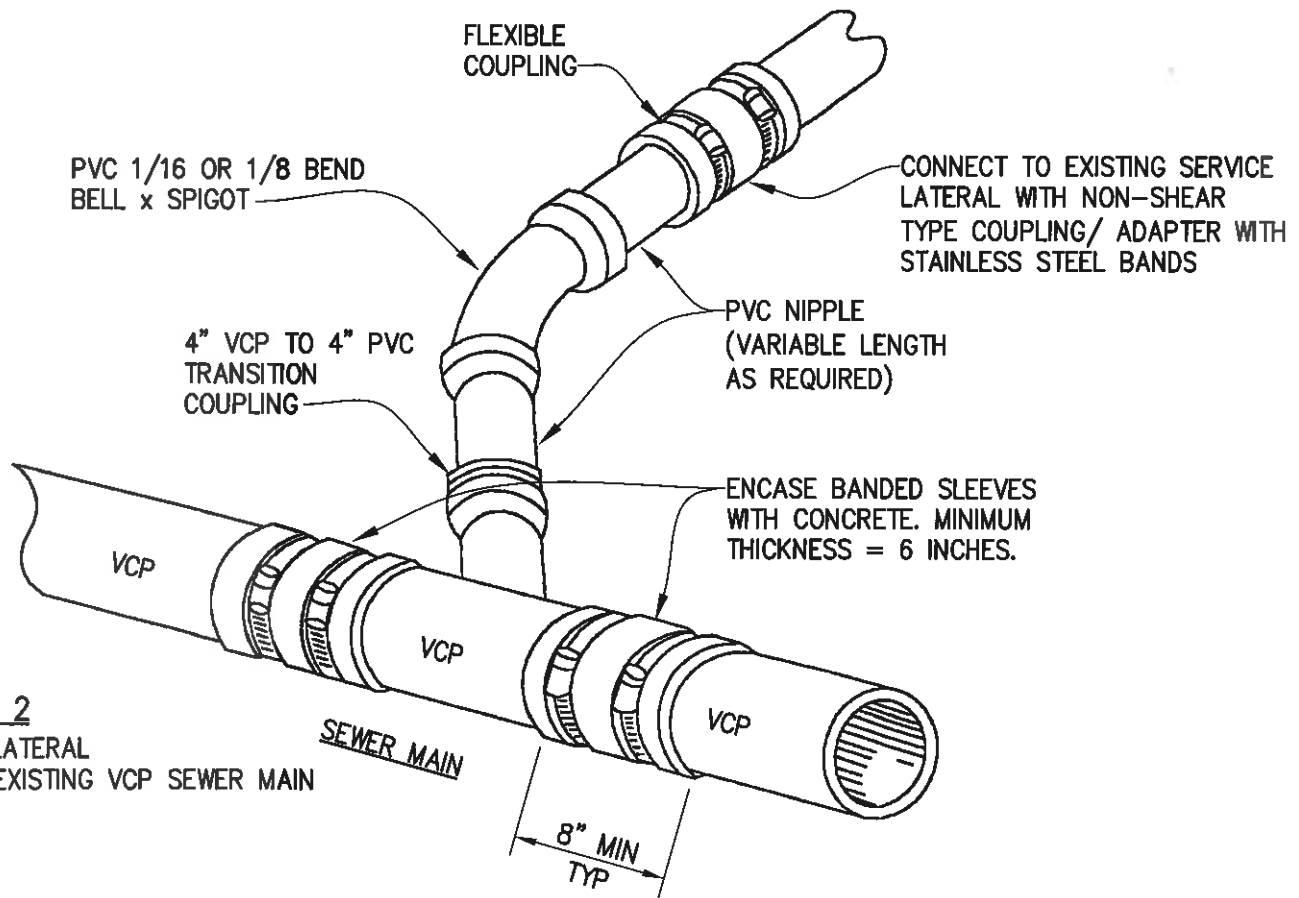
DATE: FEB 2006

SERVICE  
LATERAL CONNECTION

7

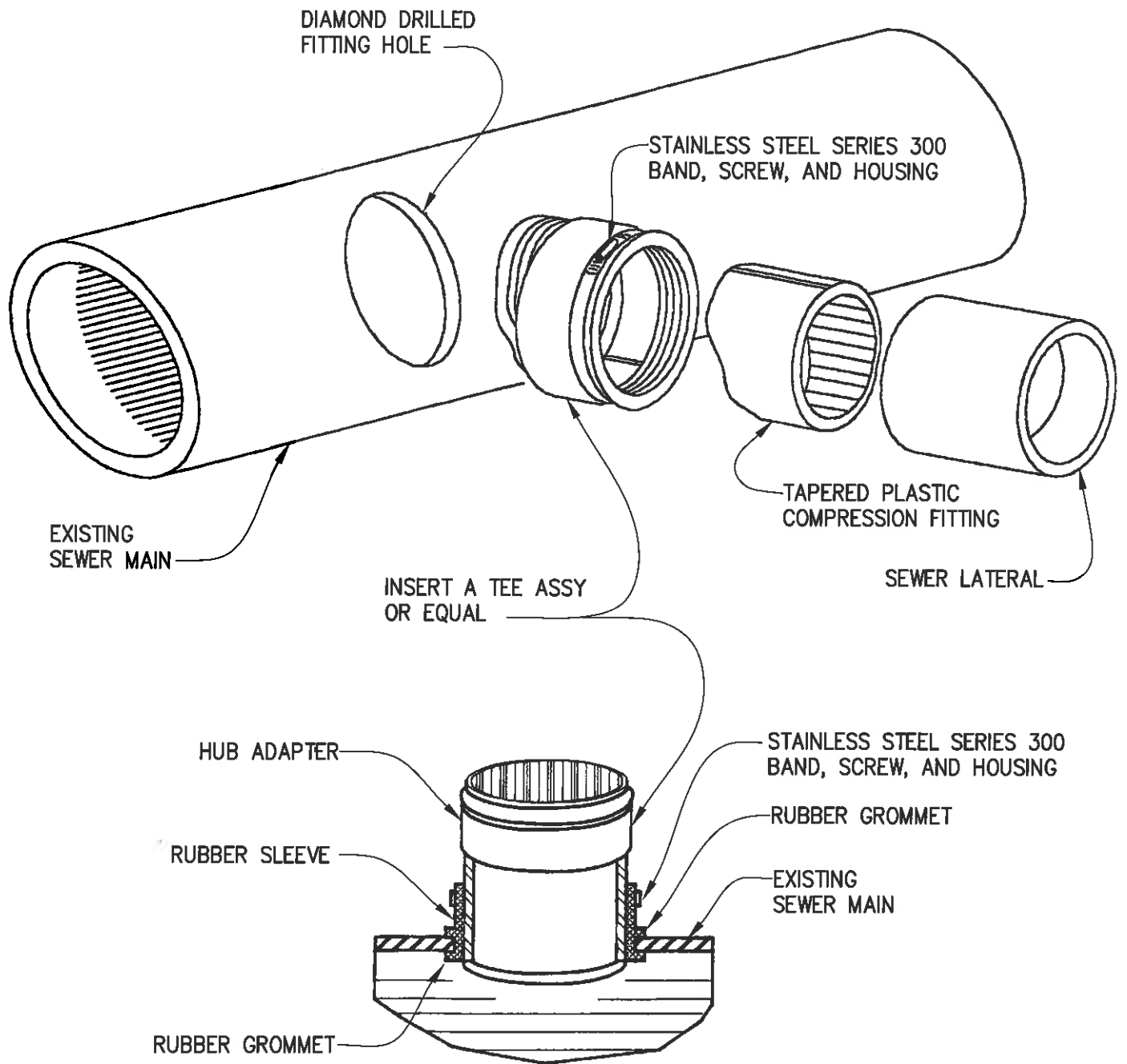


**TYPE 1**  
EXISTING LATERAL  
INTO NEW PVC SEWER MAIN



**TYPE 2**  
NEW LATERAL  
INTO EXISTING VCP SEWER MAIN

APPROVED BY:	BAYSHORE SANITARY DISTRICT STANDARD DETAIL	STANDARD No.
DATE: FEB 2006	LATERAL CONNECTION TO SEWER MAIN—TYPE 1 & TYPE 2	8



NOTE: THIS CAN ONLY BE USED WITH THE PRIOR APPROVAL OF THE DISTRICT ENGINEER

APPROVED BY:

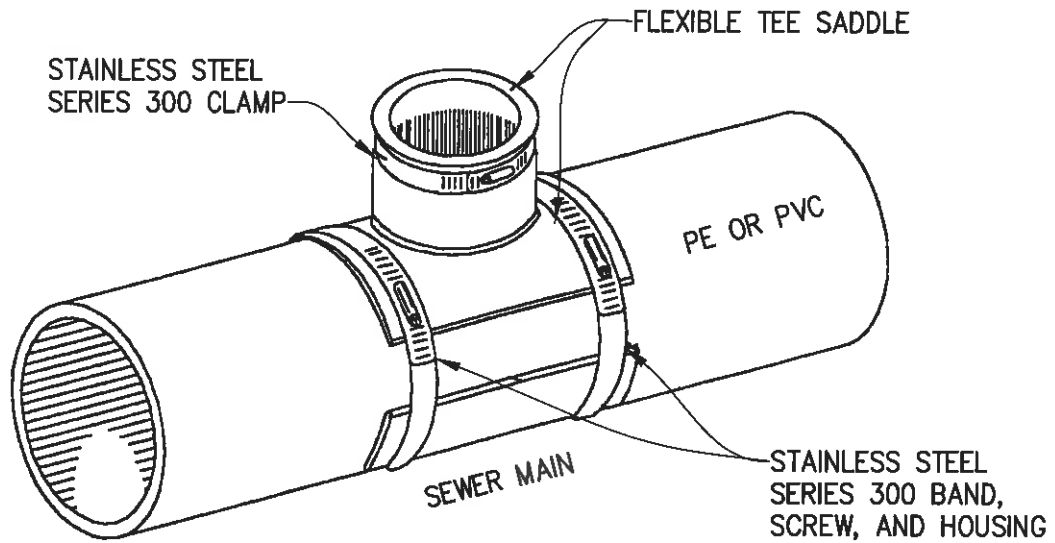
BAYSHORE SANITARY DISTRICT  
STANDARD DETAIL

STANDARD No.

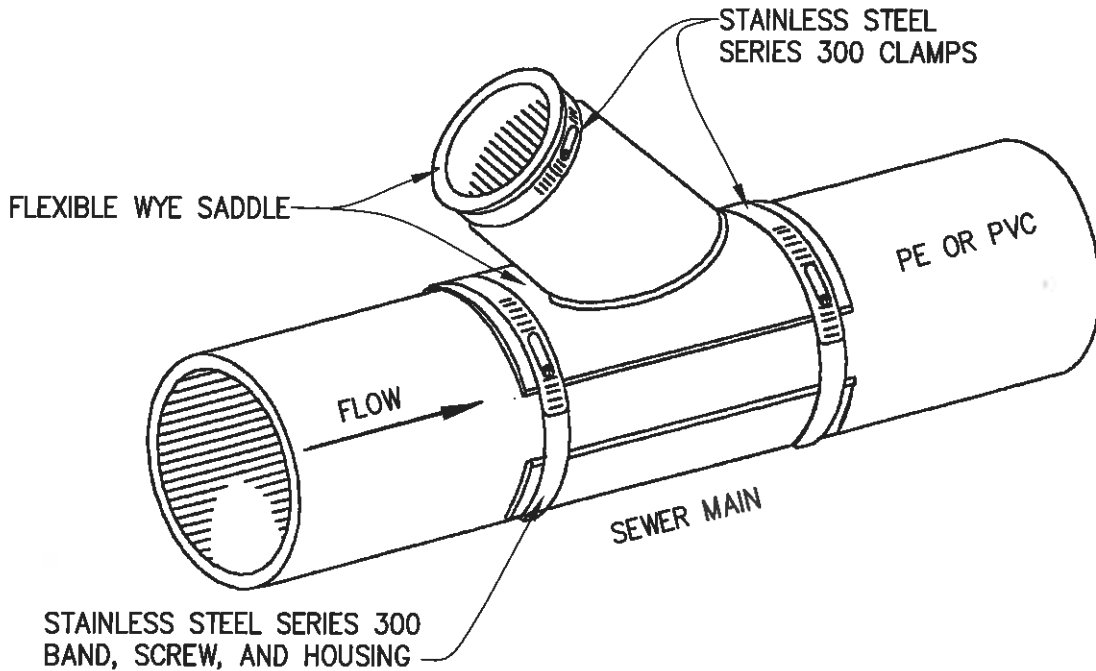
DATE: FEB 2006

LATERAL CONNECTION TO  
EXISTING VCP MAIN—TYPE 3

9



NOTE: TIGHTEN CLAMPS TO AT LEAST 60 LBS TORQUE.



NOTES:

1. AN ELASTOMERIC SEALANT SHALL BE APPLIED BETWEEN THE SEWER MAIN AND THE FLEXIBLE SADDLE TO ENSURE AN AIRTIGHT CONNECTION.
2. THIS CONFIGURATION CAN ONLY BE USED WITH THE APPROVAL OF THE DISTRICT ENGINEER.

APPROVED BY:

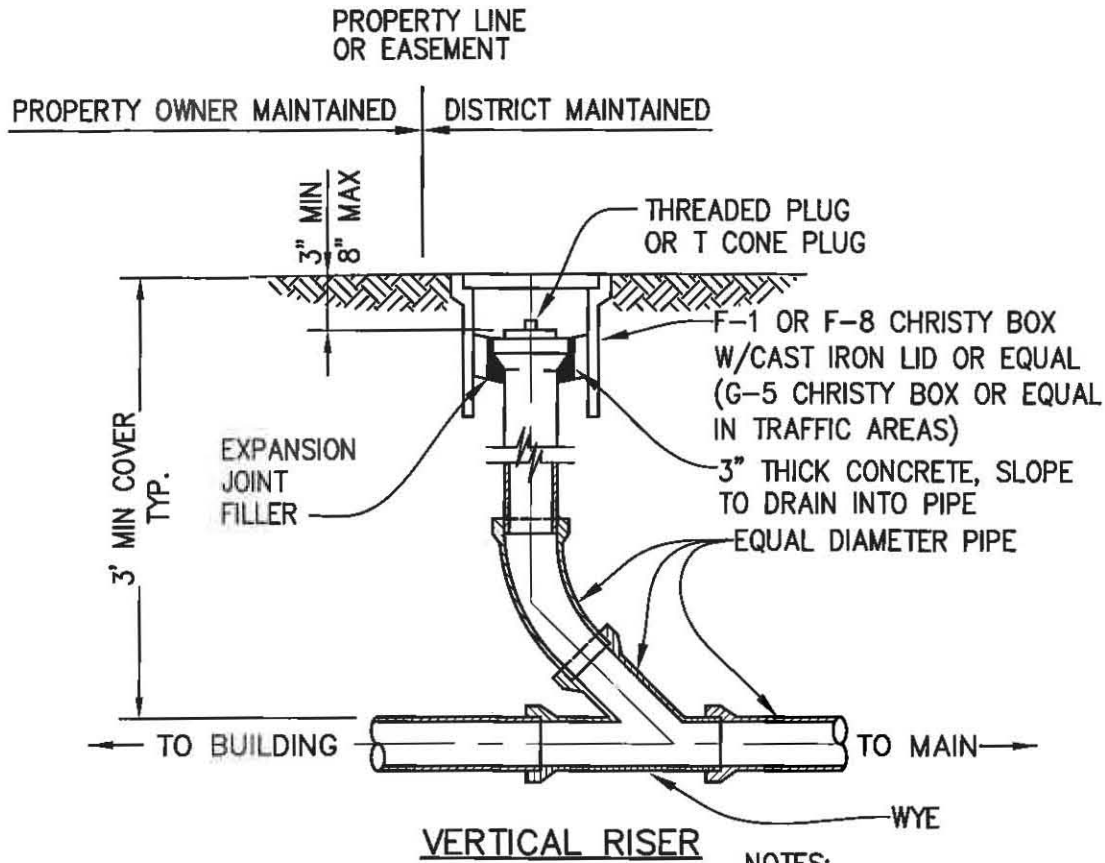
BAYSHORE SANITARY DISTRICT  
STANDARD DETAIL

STANDARD No.

DATE: FEB 2006

STRAP ON LATERAL CONNECTION TO  
HDPE OR PVC SEWER PIPE—TYPE 4

10



NOTES:

1. FOR COVER 3' AND GREATER, PIPE MATERIAL SHALL BE PVC, AWWA C900 CLASS 150 PVC (SDR 18). CLASS 200 (SDR 14) MAY BE REQUIRED IN SPECIAL CIRCUMSTANCES. HDPE SDR-17 IS AN ACCEPTABLE ALTERNATIVE.
2. IF COVER IS LESS THAN 3', PIPE MATERIAL SHALL BE POLYETHYLENE WRAPPED DUCTILE IRON.
3. FOR NEW LATERAL AND MAIN LINE INSTALLATIONS, PIPE MATERIAL SHALL BE THE SAME AS MAIN LINE MATERIAL.
4. FOR CLEANOUTS PLACED IN LANDSCAPED AREAS CONSTRUCT 18"x 18" CONCRETE PAD 4" THICK CENTERED ON OPENING.

APPROVED BY:

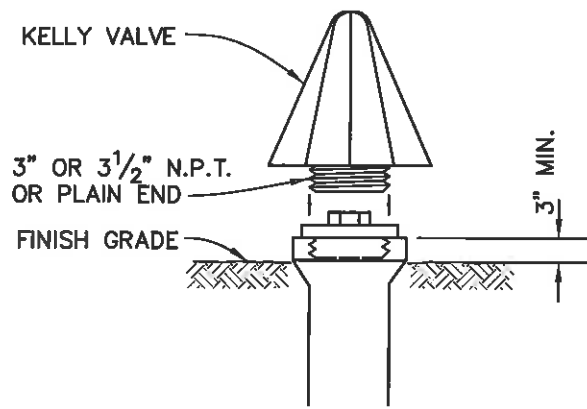
BAYSHORE SANITARY DISTRICT  
STANDARD DETAIL

STANDARD No.

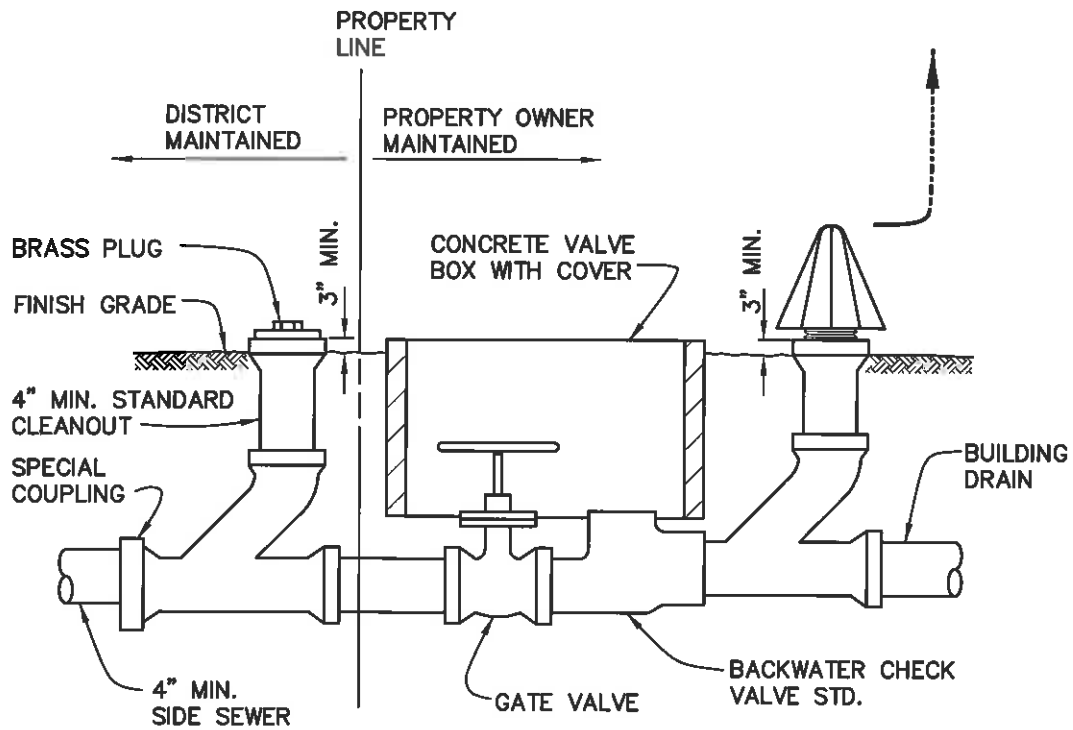
DATE: ~~MAY 2008 (REV. 1)~~  
MARCH 2018 (REV. 3)

TYPICAL SERVICE  
LATERAL CLEANOUT

11



BACKWATER OVERFLOW DEVICE



BACKWATER CHECK VALVE & SHUTOFF SYSTEM

NOTES:

1. BACKWATER CHECK VALVE SHALL BE INSTALLED ON PRIVATE PROPERTY UPSTREAM OF CLEANOUT.
2. BACKWATER CHECK VALVE TO BE MAINTAINED BY PROPERTY OWNER.
3. SEE STANDARD NO. 12 FOR CLEANOUT DETAIL.

APPROVED BY:

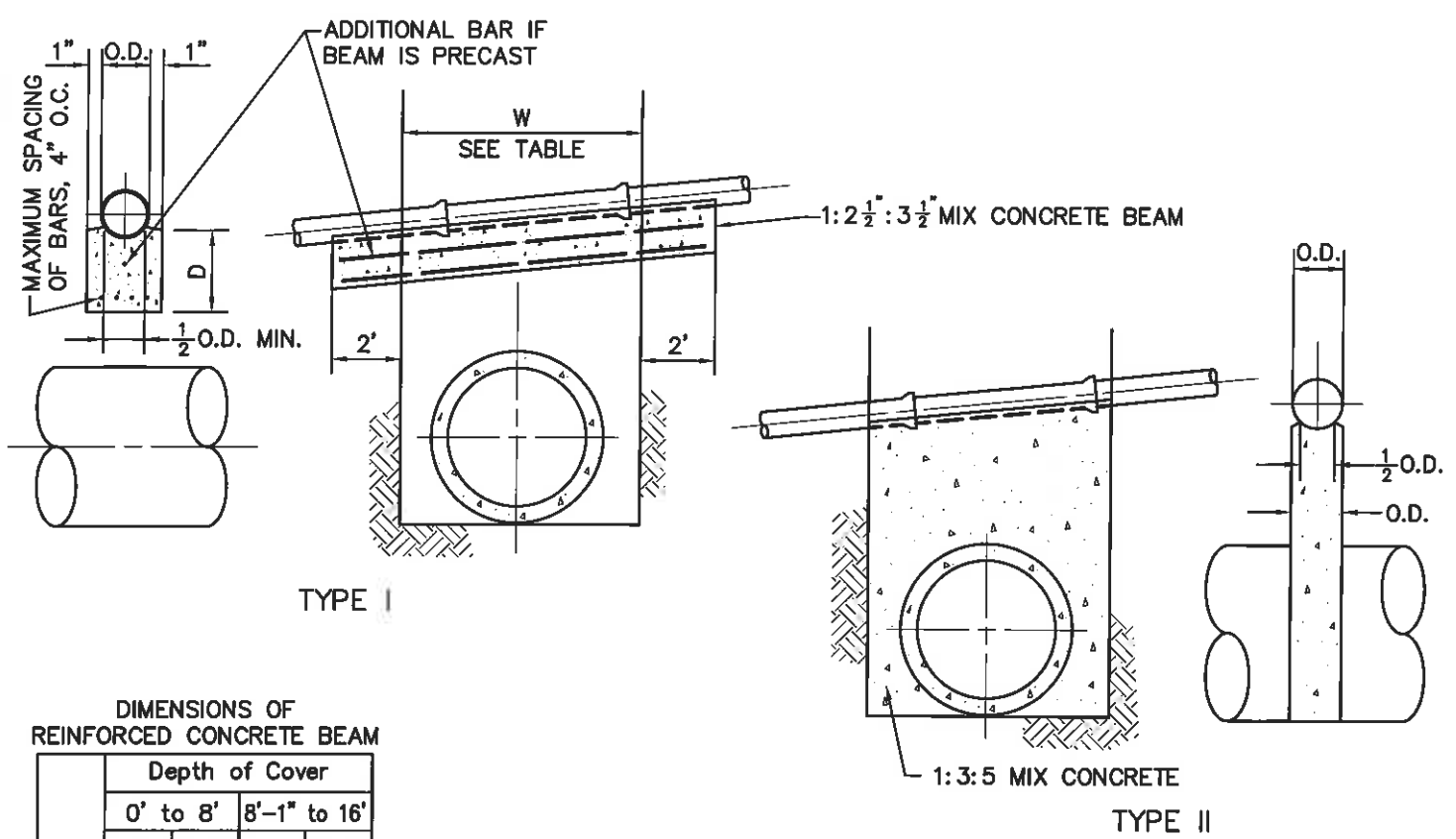
BAYSHORE SANITARY DISTRICT  
STANDARD DETAIL

STANDARD No.

DATE: FEB 2006

BACKFLOW PREVENTION DEVICE

12



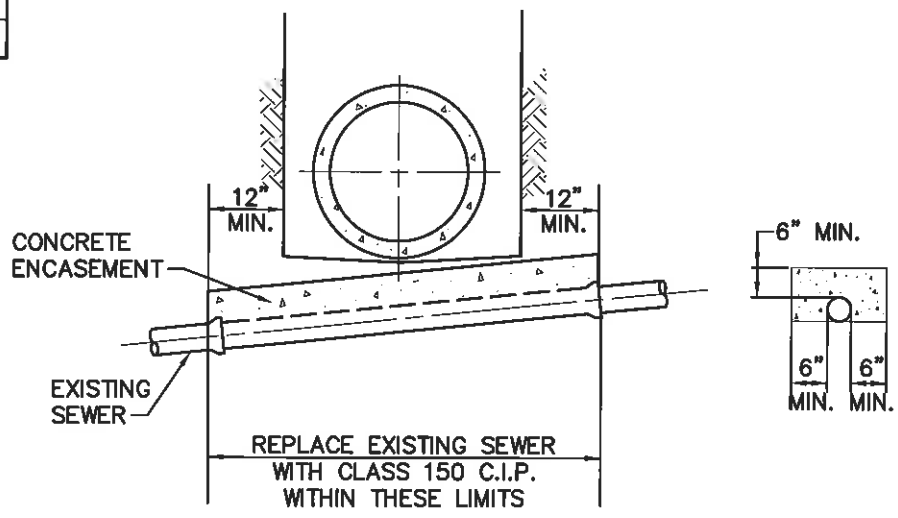
TYPE I

TYPE II

DIMENSIONS OF REINFORCED CONCRETE BEAM

	Depth of Cover			
	0' to 8'		8'-1" to 16'	
	D	Bar No.	D	Bar No.
4'	8"	4	8"	4
5'	8"	4	9"	5
6'	8 1/2"	5	10 1/2"	5
7'	9"	5	11 1/2"	6
8'	10"	5	12 1/2"	6
9'	11"	6	13 1/2"	6
10'	12"	6	15"	7

SUPPORT DETAILS OVER STORM DRAINS  
(TYPE I OR II MAY BE USED AT CONTRACTOR'S OPTION)



ENCASEMENT BENEATH STORM DRAIN

APPROVED BY:

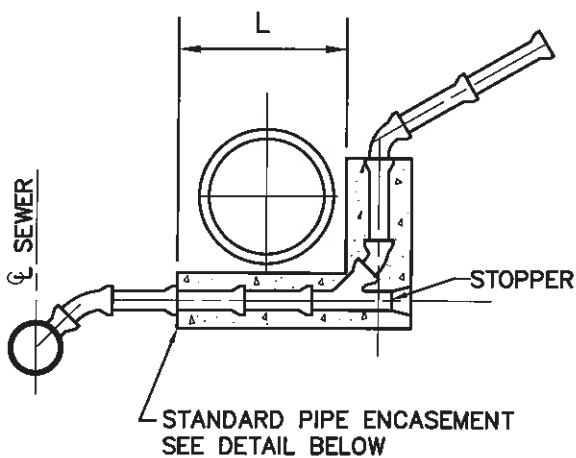
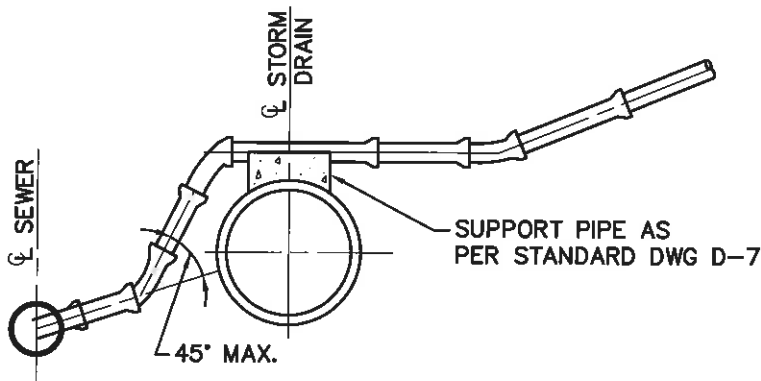
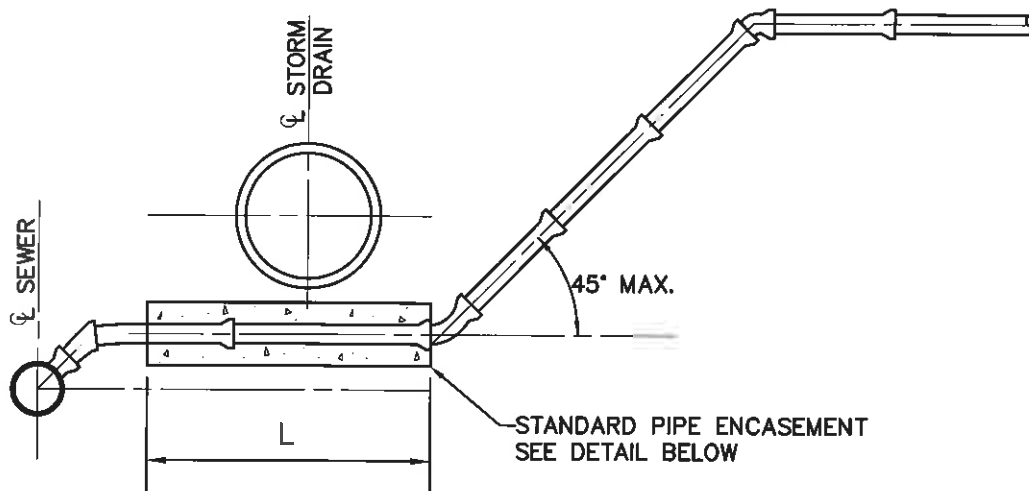
BAYSHORE SANITARY DISTRICT  
STANDARD DETAIL

STANDARD No.

DATE: FEB 2006

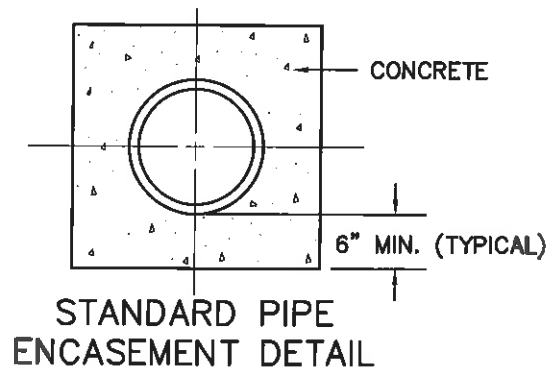
SEWER SUPPORT  
ACROSS TRENCHES

13



**NOTES:**

1. MINIMUM SLOPE FOR 6-INCH SIDE SEWER SHALL BE 1/4" PER FOOT.
2. L=WIDTH OF STORM DRAIN TRENCH PLUS EXTENSION AT BOTH SIDES TO FIRST PIPE JOINT AT OR BEYOND TRENCH.



APPROVED BY:

BAYSHORE SANITARY DISTRICT  
STANDARD DETAIL

STANDARD No.

DATE: FEB 2006

SIDE SEWERS AT  
UTILITY INTERSECTIONS

14